



2014 **UCLA**
WOMEN'S TENNIS



Front Row (L-R): Head Coach Stella Sampras Webster, Volunteer Assistant Coach Laura Gordon, Catherine Harrison, Dominique Cetale, Allie Glover. **Back Row (L-R):** Associate Head Coach Rance Brown, Manager Megan Lester, Dominika Matkowska, Robin Anderson, Kyle McPhillips, Jennifer Brady, Kelly Shaffer, Morgan Thomas, Courtney Dolehide, Chanelle Van Nguyen, Kaitlin Ray.

► 2014 Roster

Name	Ht.	Yr.	R/L	Hometown (Previous School)
Robin Anderson	5-3	Jr.		Matawan, N.J. (Matawan Regional)
Jennifer Brady	5-9	Fr.		Boca Raton, Fla.
Dominique Cetale	5-5	Fr.		San Diego, Calif. (Francis W. Parker)
Courtney Dolehide	6-0	Sr.		Hinsdale, Ill. (Hinsdale Central)
Allie Glover	5-5	Fr.		Newport Beach, Calif. (Mater Dei)
Catherine Harrison	5-5	So.		Germantown, Tenn. (Laurel Springs)
Dominika Matkowska	5-5	So.		Szczecin, Poland (Adam Asnyk)
Kyle McPhillips	5-5	So.		Willoughby, Ohio (Andrews Osborne Academy)
Kaitlin Ray	5-4	Jr.		Little Rock, Ark. (Kaplan College Prep)
Kelly Shaffer	5-11	Fr.		Rancho Santa Fe, Calif. (The Bishop's School)
Morgan Thomas	5-6	Sr.		Rolling Hills, Calif. (Palos Verdes)
Chanelle Van Nguyen	5-2	Jr.		Miami, Fla. (K12 International Academy)

► Team Personnel

Head Coach: Stella Sampras Webster
18th Season, UCLA '91

Associate Head Coach: Rance Brown
17th Season, Long Beach State '11

Volunteer Assistant Coach: Laura Gordon
2nd Season, UCLA '06

Student Manager: Megan Lester

► Pronunciation Guide

Courtney Dolehide	<i>DOLE-uh-hide</i>
Dominique Cetale	<i>Say-TAL</i>
Dominika Matkowska	<i>Dom-in-ee-ka</i>
Chanelle Van Nguyen	<i>van-WIN</i>

► Stella SAMPRAS WEBSTER

Head Coach • 18th Season • UCLA '91

► Career Coaching Record

Year	Overall Record	Conf. Record	Conf. Finish	NCAA Finish
1997	16-6	7-3	2nd	T-5th
1998	17-11	5-3	4th	T-9th
1999	18-8	5-3	4th	T-17th
2000	17-9	6-2	T-2nd	T-5th
2001	9-19	4-4	7th	T-9th
2002	19-5	6-2	3rd	T-5th
2003	16-11	4-4	5th	T-5th
2004	21-8	6-2	3rd	2nd
2005	17-6	6-2	3rd	T-9th
2006	15-7	5-3	4th	T-9th

Year	Overall Record	Conf. Record	Conf. Finish	NCAA Finish
2007	21-8	6-2	T-2nd	2nd
2008	24-5	7-1	T-1st	1st
2009	19-7	5-3	T-9th	4th
2010	21-4	6-1	2nd	T-9th
2011	22-6	7-1	2nd	T-3rd
2012	26-3	8-2	T-3rd	2nd
2013	20-6	7-3	4th	T-3rd
Totals	318-129	57-18		

The 2012 ITA National Coach of the Year, Stella Sampras Webster is in her 18th season as head coach of the UCLA women's tennis program, taking a career record of 318-129 (.711) into the 2014 season. She is only the third head coach in UCLA women's tennis history, following Bill Zaima (1972-76 & 1986-96) and Gayle Godwin (1977-86).

In 2008, Sampras Webster led UCLA to the school's first NCAA Championship in women's tennis and first national championship since 1981 (AIAW). UCLA finished the season with a 24-5 overall record, marking the most wins for the program since 1982. Seeded No. 7 in the NCAA Tournament, the Bruins' dramatic run to the title culminated with a 4-0 victory over Cal in the final in Tulsa, Okla. It marked the 102nd NCAA title in UCLA history. Sampras Webster also guided the Bruins to their first Pac-10 Championship in 2008, finishing the conference season with a 7-1 record. She was named Pac-10 Coach of the Year at the end of the season.

Few college coaches can match Sampras Webster's ability to continually put their teams in the title hunt year in and year out. Prior to the 2008 championship season, she also guided the program to a pair of second-place finishes in 2004 and 2007. In all, Sampras Webster's teams have finished in the top 10 at the NCAA Championships in 16 of her 17 seasons in Westwood. UCLA has also finished in the top 5 nationally on 11 occasions (1997, 2000, 2002, 2003, 2004, 2007, 2008, 2009, 2011, 2012 and 2013).

The 2000 ITA West Region Coach of the Year, Sampras Webster has recruited and coached some of the top players in collegiate tennis. Under her tutelage, a total of 22 players have achieved All-America status. Probably the most notable player during Sampras Webster's tenure is Riza Zalameda, who was a four-time All-American and the Most Outstanding Player at the 2008 NCAA Championships. She and partner Tracy Lin captured the NCAA Doubles title in 2008, marking the second UCLA team to capture the doubles title under Sampras Webster's tenure. Lauren Fisher and Daniela Bercek also won the title in 2004.

A 1991 graduate of UCLA with a degree in Psychology, Sampras Webster enjoyed a successful four-year career as a Bruin player from 1987-91 and competed on the pro circuit for a season prior to joining Zaima's staff. An

NCAA Doubles Champion as a freshman in 1988 with Allyson Cooper, Sampras Webster was also the NCAA doubles runner-up as a senior in 1991 with Kimberly Po. A four-time All-American, Sampras Webster was only the second player in UCLA history to obtain this status. She also won the 1989 and '91 Pac-10 doubles championship and the 1990 Rolex Regional doubles title. Sampras Webster completed her UCLA career ranked No. 3 nationally in doubles and No. 42 in singles. Team accomplishments were most important to Sampras Webster, who helped lead the Bruins to four straight NCAA top-three finishes. As a professional, Sampras Webster's highest international singles ranking was No. 248, and her best in doubles was No. 142. Her professional highlights include competing in both singles and doubles at the U.S. Open and Lipton Championships. She advanced to the U.S. Open second round in doubles and also competed in doubles at Wimbledon. She also won three satellite tournament titles and competed in Team Tennis for the Wichita Advantage in 1992.

Born in Potomac, Md., Sampras Webster moved to the Los Angeles area as a child and graduated from Palos Verdes High School. A top-three player in Southern California and among the top 10 in the country as a junior, Sampras Webster claimed the CIF doubles title as a freshman and the singles title as a senior in 1987. She capped her high school career by being named her school's Athlete of the Year.

The second-oldest of four children of Sam and Georgia Sampras, Stella considers the support of her entire family most significant. Younger brother Pete demonstrated his level of support for Stella and the Bruin program when he personally endowed a scholarship and assisted with the important fund-raising effort in Stella's first fall at the helm. Pete won a record 14 Grand Slam singles titles during his playing days, including seven Wimbledon championships. Sampras Webster and her husband, Steve, were married on January 3, 2002 in Dana Point, Calif. They are the proud parents of twin girls Sophia and Savannah.



Stella and her husband Steve with twins Sophie (left) and Savannah.



► Rance **BROWN**

Associate Head Coach

17th Season

Long Beach State '11

Associate Head Coach Rance Brown is in his 16th season on the UCLA women's tennis coaching staff. He served as an assistant to Bill Zaima during the 1996 season, and has been Stella Sampras Webster's top assistant for 15 seasons. The 2000 and 2012 ITA National Assistant Coach of the Year, Brown was promoted to the position of associate head coach effective at the beginning of the 2008-09 season.

During Brown's tenure in Westwood UCLA has continually been among the top teams in the nation as. In addition to the 2008 NCAA Championship, the Bruins have finished runner-up at the NCAA Championships three times (2004, 2007 and 2012). The Bruins have made the NCAA Tournament in each of his 15 seasons as an assistant. Brown has especially excelled in the area of recruiting, bringing in a number of highly-ranked junior players to the program in the last several years. He also instrumental in the success of NCAA Singles Champion Keri Phebus, who recently became the first women's tennis player inducted into the UCLA Athletics Hall of Fame. Brown has been named the ITA Southwest Region Assistant Coach of the Year on five occasions (1999, 2000, 2007, 2010 and 2012). He spent the

summer of 2008 as the coach of the USTA Summer Collegiate Team, traveling to professional tournaments with some of the top women's college players in the nation.

In addition to his efforts with the UCLA program, Brown was among the first graduating classes of the USTA High Performance Coaches' Program. He currently works at the Riviera Country club, heading up the club's Elite Junior Tennis Program along with professional coach Erik Kortland. Prior to his appointment at Riviera, Brown headed up one of the most successful junior tennis programs in the country, serving as Director of Tennis at the Newport Beach Marriott Hotel and Tennis Club in Orange County for more than 20 years.

Brown received his Associate of Arts degree from Golden West Junior College, where he played for two years. He helped lead the team to two conference team titles and notched one conference doubles title. He played the 1981 season at Long Beach State and competed professionally at Challenger Level tournaments before devoting his time to coaching. He continues to work towards his B.A. in Recreation Management from Long Beach State.



► Laura **GORDON**

Volunteer Assistant Coach

2nd Season

UCLA '06

Former UCLA All-American Laura Gordon enters her second season as a volunteer assistant coach with the UCLA women's tennis program. In 2013, Gordon took over for legendary coach Bill Zaima, who retired following the 2012 season after 38 seasons with the program.

Since graduating from UCLA in 2006, Gordon has served as a full-time assistant coach at both Fresno State and Harvard. She was on the Fresno State coaching staff during the 2008-09 season, helping the Bulldogs reach the round of 16 at the NCAA Championships. Fresno State also won the WAC Championship that year, finishing the season with a 24-6 overall record. An excellent doubles player herself, Gordon was instrumental in the development of ITA National Doubles Team of the Year Renata Kucerkova and Anastasia Petukhova. The Bulldog duo, which was ranked No. 1 in the country during the season, reached the semifinals at the NCAA Doubles Championships.

Following her stint at Fresno State, Gordon served one season as an assistant coach at Harvard in 2009-10. The Crimson earned a spot in the 64-team draw for the NCAA Championships that

season, also finishing in second place in the Ivy League standings. Harvard's top player, Holly Cao, also participated in the NCAA Singles Championships in 2010.

Following her playing career at UCLA, Gordon spent the 2006-07 season as an undergraduate assistant with UCLA under head coach Stella Sampras Webster. Gordon helped guide the Bruins to the NCAA Final that year, as the Bruins finished the season with a 21-8 record and a No. 3 ranking.

Gordon was a member of the UCLA women's tennis team from 2002-06. She arrived at UCLA as a walk on and eventually worked her way to the No. 1 singles and doubles positions. She earned All-America honors in both singles and doubles as a senior, reaching the quarterfinals of the 2006 NCAA Doubles Championships with partner Riza Zalameda. Gordon earned All-Pac-10 and All-Academic Pac-10 honors following the 2006 season, and also received the ITA/Cissie Leary Award for Sportsmanship that same year.

She graduated from UCLA with a degree in history in 2006.

▶ Robin ANDERSON

Junior • 5-3 • Right-Handed

Matawan, N.J.

Matawan Regional High School



▶ Career Singles Record

Year	Duals	Tournaments	Overall
2011-12	21-2	15-7	36-9
2012-13	14-6	16-1	30-7
Totals	35-8	31-8	66-16

▶ Career Doubles Record

Year	Duals	Tournaments	Overall
2011-12	17-7	10-4	27-11
2012-13	10-11	12-4	22-15
Totals	27-18	22-8	49-26

▶ 2012-13

One of just eight players in the country to earn All-America honors in both singles and doubles ... First-Team All-Pac-12 selection ... Seeded No. 3 in the NCAA Singles Draw, reaching the round of 16 before falling to eventual NCAA Finalist Mary Weatherholt of Nebraska in three sets ... Reached the NCAA Doubles Final with partner Skylar Morton, falling to second-seeded Kaitlyn Christian and Sabrina Santamaria of USC 6-4, 6-3 ... Ended the season ranked No. 4 nationally in singles and No. 8 in doubles (w/Morton) ... Ranked as high as No. 2 in the country in singles (Feb. 26) ... Posted a 30-7 overall singles record on the season ... Was also 14-6 in dual matches all at the No. 1 position ... Registered the most wins on the team over ranked opponents (17) ... Went 22-15 in doubles, playing mostly with Morton at the No. 1 position ... Posted a perfect 11-0 singles record during the fall ... Won the only two tournaments she entered, cruising to titles at the USTA/ITA Southwest Regional Championships and the ITA National Indoor Intercollegiate Championships ... Defeated Cal's Anett Schutting, 6-3, 6-4 in the final of the National Indoors ... Also downed fifth-ranked Zsofi Susanyi of Cal, 6-1, 6-2 in the semifinals, marking her highest-ranked singles win on the season.

▶ 2011-12

Earned All-America honors in both singles and doubles ... Named Pac-12 Freshman of the Year ... First-Team All-Pac-12 selection ... Ended the season listed at No. 5 nationally in singles and No. 9 in doubles (w/Skylar Morton) in the Final ITA Rankings ... Seeded No. 4 in singles at the NCAA Championships, falling in the round of 16 to Cal's Zsofi Susanyi 7-5, 6-4 ... Named the Most Outstanding Player at the USTA/ITA National Team Indoors, helping UCLA win its first-ever title at the event ... Posted a team-best 36 singles wins on the season, finishing the year with a 36-9 overall record ... Went 21-2 in dual matches, playing every match but two at the No. 1 singles position ... Went 23-8 against nationally ranked opponents ... Highest-ranked victory of the season came over No. 3 Nicole Gibbs of Stanford, who went on to win the NCAA Singles title ... Quarterfinalist in singles at the Pac-12 Championships in Ojai, Calif. ... Went 27-11 overall in doubles, teaming mostly Morton at the No. 1 position ... Posted 17-7 doubles record in dual matches ... Listed at No. 2 in the ITA Freshman Rankings at the beginning of the fall season ... Owned a 9-3 record in fall singles action ... Won the first six matches of her college career, advancing through qualifying and into the main draw at the Riviera/ITA All-American Championships ... Advanced all the way to the semifinals before falling to Florida's Allie Will, 6-4, 6-1 ... Earned a spot in both the singles and

doubles draws (w/Morton) at the USTA/ITA Intercollegiate Indoor Championships in Flushing, NY ... Lost in the first round of singles before advancing to the consolation finals where she lost to Duke's Beatrice Capra, 1-6, 7-5, 7-6(6) ... Posted an 8-2 record in fall doubles play ... Teamed with Morton to take home the title at the USTA/ITA Southwest Regional Championships, downing USC's Kaitlyn Christian and Sabrina Santamaria, 8-4 in the final.

▶ High School / Juniors

Listed as the No. 1 overall recruit in the class of 2011 by *TennisRecruiting.net* ... Owned a career-high combined ITF world ranking of No. 56 in 2010 ... Quarterfinalist at the 2011 USTA Girls' 18s National Championships ... Captured the 2011 USTA National Open Playoffs to earn a spot in the qualifying draw of the U.S. Open ... Defeated former UCLA player Yasmin Schnack in the National Open final ... Advanced through qualifying and all the way to the quarterfinals of the junior draw at the 2010 U.S. Open ... Also reached the quarterfinals in doubles at the U.S. Open (w/Monica Turewicz) ... Semifinalist at the Easter Bowl in 2010 ... Also reached the quarterfinals at the 2009 Orange Bowl ... Played mostly professional-level tournaments during her final year of high school ... Captured the singles title at a pro circuit event in Landisville, PA in 2011 ... Owned a career-high WTA Tour singles ranking of No. 640 in the world in November of 2011.

▶ Personal

Full name is Robin Kimberly Anderson ... Born on April 12, 1993 in Long Branch, N.J. ... Parents are Denom and Trudy Anderson ... Younger siblings are Matthew and Samantha ... Lists reaching the quarterfinals of the U.S. Open Junior Championships as her greatest athletic thrill ... Admires former world No. 1 Justine Henin ... Enjoys playing soccer, listening to music and watching movies in her spare time.



▶ Courtney DOLEHIDE

Senior • 5-7 • Right-Handed

Hinsdale, Ill.

Hinsdale Central HS

▶ Career Singles Record

Year	Duals	Tournaments	Overall
2010-11	10-9	11-5	21-14
2011-12	0-0	1-2	1-2
2012-13	16-6	3-5	19-11
Totals	26-15	15-12	41-27

▶ Career Doubles Record

Year	Duals	Tournaments	Overall
2010-11	10-10	12-3	22-13
2011-12	11-3	11-2	22-5
2012-13	16-5	5-4	21-9
Totals	37-18	28-9	65-27

▶ 2012-13

Honorable Mention All-Pac-12 Academic selection ... Ended the year with a 19-11 overall singles record ... Went 16-6 in dual matches playing primarily at the No. 6 position where she went 13-3 ... Played as high as No. 3 in the lineup ... Contributed significantly in doubles, beginning the season ranked No. 2 nationally with Pamela Montez ... Teamed with Montez at the No. 2 position for much of the year, going 12-4 ... Ended the season ranked No. 38 in doubles (w/Montez) ... Advanced to the doubles final (w/Montez) at the Pac-12 Championships, falling to USC's second-ranked Kaitlyn Christian and Sabrina Santamaria, 6-3, 6-3.

▶ 2011-12

Hampered for much of the season due to injury ... Unable to play singles, however contributed significantly in doubles ... Earned All-American honors in doubles ... Ended the season ranked No. 4 in the country (w/Pamela Montez) ... Advanced to the semifinals in doubles (w/Montez) at the NCAA Championships, falling to Georgia's Nadja Gilchrist and Chelsey Gullickson, 6-1, 6-2 ... Teamed with Montez to take home the doubles title at the Freeman Memorial Championships in Las Vegas, downing third-ranked Kaitlyn Christian and Sabrina Santamaria of USC, 8-4 ... Was 22-5 overall in doubles ... Also notched an 11-3 mark in dual matches, teaming mostly with Montez at the No. 2 position ... Also went 5-1 with Montez at the No. 1 position ... Participated in both the singles and doubles draws at the ITA/Riviera All-American Championships in Los Angeles ... Advanced through qualifying and into the main doubles draw with Montez ... Did not play in any more tournaments during the fall due to injury ... Honorable Mention All-Pac-12 Academic selection.

▶ 2010-11

Finished the season listed at No. 74 in singles and No. 23 in doubles (w/Andrea Remyse) in the Final ITA Rankings ... Ranked as high as No. 36 in singles (Jan. 4) and No. 7 in doubles (preseason) during the year ... Ended the year with a 21-14 overall singles record and a 22-13 mark in doubles play ... Played primarily at the Nos. 4 and 5 singles positions, going 10-9 in dual-match play ... Teamed with Remyse at the NCAA Doubles Championships, falling to Northwestern's 12th-ranked Linda Abu Meshrefova and Nida Hamilton, 6-4, 6-2 in the round of 16 ... Played at the No. 1 doubles position for all season, going 10-10 in dual matches ... Took home the doubles title (w/Remyse) at the National Collegiate Tennis Classic, upsetting third-ranked Hillary Barte and Mallory Burdette in the final ... Began the fall season ranked No. 6 in the ITA's list of incoming players for the 2010-11 college season ... Posted an 8-3

record in fall singles play ... Advanced through prequalifying and into the qualifying draw for the Riviera/ITA All-American Championships ... Reached the semifinals of singles at the USTA/ITA Southwest Regionals, falling to third-ranked Maria Sanchez of USC, 6-4, 6-1 ... Reached the round of 16 in doubles (w/Remyse) at the Riviera/ITA All-American Championships ... Advanced to the quarterfinals at the USTA/ITA Regionals with McCall Jones.

▶ High School/Juniors

Listed as a Blue Chip recruit (No. 7 nationally) in the class of 2010 according to TennisRecruiting.net ... Achieved a career-high ITF junior world ranking of No. 148 in September of 2009 ... Also ranked as high as No. 470 in singles on the WTA Tour ... Played in the main doubles draw (w/Kristie Ahn) at the 2009 U.S. Open, falling to the team of Bethanie Mattek-Sands/Nadia Petrova, 6-3, 6-2 in the opening round ... Played primarily on the ITF Women's Circuit the last few years ... Reached the singles final in Wichita in 2009 ... Quarterfinalist in the Bronx in 2009, defeating 82nd-ranked Patricia Mayr of Austria in the round of 16 ... Enjoyed an outstanding junior career, capturing two USTA Silver Balls and one Bronze Ball in singles ... Also earned three USTA Balls in doubles, claiming a Gold Ball at the National Claycourts in 2008 (w/Jacqueline Cako) ... Doubles finalist at the 2009 National Hardcourts (w/Ahn) ... Advanced through qualifying and into the main singles draw at the 2009 U.S. Open Junior Championships ... Defeated Romania's Cristina Dinu, 6-0, 4-6, 6-4 in the opening round ... Also reached the round of 16 at the 2009 Easter Bowl ... Quarterfinalist at the USTA International Spring Championships ... Has played a number of prestigious junior events, including the Orange Bowl and Eddie Herr International Championships ... Reached the round of 16 at both events in 2008 ... Quarterfinalist in doubles at the 2010 Easter Bowl (w/Ellen Tsay) ... Finalist at the Kentucky International Junior Tennis Derby in 2008 (w/Cako) ... Has represented the Midwest Section in Junior Fed Cup ... State champion in doubles as a freshman and sophomore at Hinsdale Central High School.

▶ Personal

Full name is Courtney Bernadette Dolehide ... Born on March 25, 1992 in Hinsdale, Ill. ... Parents are Mary Catherine and Brian Dolehide ... Younger siblings are Brian, Caroline and Stephanie ... Both sisters play tennis ... Brother is an accomplished golfer who hopes to one day attend UCLA ... Cousin, Tom Gorzelanny, pitches for the Washington Nationals ... Enjoys reading, shopping and hanging out with friends in her spare time ... Undeclared major.



► Catherine HARRISON

Sophomore • 5-5 • Right-Handed
Germantown, Tenn.
Laurel Springs High School

► Career Singles Record

Year	Duals	Tournaments	Overall
2012-13	18-4	7-4	25-8

► Career Doubles Record

Year	Duals	Tournaments	Overall
2012-13	17-5	3-4	20-9

► 2012-13

One of three 20-match winners on the team, ending the season with a 25-8 overall record ... Was 18-4 in dual matches playing mostly at the No. 5 position where she was 14-2 ... Her 18 dual-match wins led the team ... Clinched the team's 4-3 victory over Pepperdine on Feb. 28 in Malibu, downing Megan Moore, 6-1, 7-5 in the deciding match ... Posted a 4-3 record against nationally ranked opponents ... Highest ranked win of the season came over No. 19 Zoe Scandalis of USC in the quarterfinals of the National Collegiate Tennis Classic ... Also had wins over No. 92 Stephanie Wagner (Miami) and No. 51 Ellen Tsay (Stanford) ... Posted a 4-0 singles record in UCLA's run to the semifinals of the NCAA Team Championships in Champaign, Ill. ... Notched a 20-9 overall doubles record on the season ... Was

17-5 in dual matches, teaming mostly with fellow freshman Kyle McPhillips at court No. 3.

► High School/Juniors

Ranked as the No. 10 recruit in the class of 2012 according to *TennisRecruiting.net* ... Ranked a career-high No. 104 in the ITF World Junior Rankings ... Participated in three of the four Junior Grand Slams, seeing action at the Australian Open, Wimbledon and U.S. Open ... Signed with UCLA while in London for Wimbledon ... Quarterfinalist in doubles (w/Samantha Crawford) at the 2011 U.S. Open ... Southern Sectionals 18s Singles Champion in 2010 ... Atlanta ITF Champion in 2011 ... Orange Bowl singles finalist in 2011 (16s) ... Silver Ball winner at the Spring Nationals in 2011 ... Bronze Ball winner at the USTA National Clay

Courts in 2010 ... National Open winner in three age divisions (14s, 16s and 18s) ... Captured a Gold Ball in doubles with Hannah King at the 2010 USTA National Hardcourts ... Has also played in a number of professional events on the ITF Women's Circuit, reaching the finals at Amelia Island (10k) in 2010 ... Received a wild card to compete in the main draw at the 2011 Cellular South Cup, an annual event on the WTA Tour ... Graduated from Laurel Springs Online High School.

► Personal

Full name is Catherine Elizabeth Frances Harrison ... Born on April 9, 1994 in Memphis, Tenn. ... Parents are Kent and Jan ... Admires tennis professionals Roger Federer and Brian Baker ... Enjoys reading and shopping in her spare time.



► Dominika MATKOWSKA

Sophomore • 5-5 • Right-Handed
Szczecin, Poland / Adam Asnyk

► 2012-13

Did not see any action.

► High School/Juniors

Polish Regional Champion in both singles and doubles for the 14s and 16s age divisions ... Quarterfinalist in both singles and doubles at the Polish Junior Championships (16s division) ... Played club tennis for SKT Szczecin ... Helped SKT Szczecin reach the finals of the Polish Club Championships in 2011 ... Attended high school at Adam Asnyk in Szczecin from 2009-12.

► Personal

Born on July 8, 1993 in Szczecin, Poland ... Parents are Zbigniew and Yolanta ... Older brother, Marcin, was a member of the UCLA men's tennis team from 2001-03, earning All-America honors in 2002 ... He turned professional following his junior year and is one of the top doubles players on the ATP World Tour, cracking the top 10 of the world rankings ... He has also represented Poland in a number of Davis Cup competitions ... Dominika enjoys reading books, photography and traveling in her spare time ... Plans to major in business/econ at UCLA.



► Kyle McPHILLIPS

Sophomore • 5-5 • Right-Handed

Willoughby, Ohio

Andrews Osborne Academy

► Career Singles Record

Year	Duals	Tournaments	Overall
2012-13	18-4	7-4	25-8

► Career Doubles Record

Year	Duals	Tournaments	Overall
2012-13	17-5	3-4	20-9

► 2012-13

Pac-12 Freshman of the Year ... Second-Team All-Pac-12 selection ... Singles All-American ... Captured the singles title at the Pac-12 Championships, downing Stanford's Krista Hardebeck, 6-1, 6-0 in the final ... Participated in the singles draw at the NCAA Championships ... Advanced to the second round before falling to Kansa State's Petra Niedermayerova in three sets ... That loss snapped her 14-match winning streak ... Ended the year as UCLA's second-highest ranked singles player at No. 17 ... Posted the most singles victories on the team with 34 ... Was 17-4 in dual matches ... Saw time at the Nos. 1-3 positions ... Was undefeated at court Nos. 1 and 2, going 3-0 at the No. 1 spot and 9-0 at the No. 2 position ... Registered a 15-7 record against ranked opponents ... Clinched UCLA's 4-3 victory over No. 7 Cal on Feb. 22 at the LATC, downing Klara Fabikova, 6-3, 4-6, 7-3 at court No. 3 ... Named Pac-12 Player of the Week following that win ... Also led the team in doubles wins, going 26-11 overall ... Played mostly with Catherine Harrison at court No. 3 where the duo was 14-4 ... Teamed with Skylar Morton to take home the doubles title at the USTA Collegiate Invitational, downing Michigan's Emina Bektas and Brooke Bolender, 9-7 in the final.

► High School/Juniors

Listed as the No. 3 overall recruit in the class of 2012 according to *TennisRecruiting.net* ... Held the No. 1 ranking in the United States in every age division ... Earned a career-high combined ITF World Junior Ranking of No. 11 in Dec. of 2012 ... Career junior ITF singles record of 72-31 ... Was 74-29 in ITF junior doubles matches ... Has played in all four Junior Grand Slams, seeing action at the Australian Open, Wimbledon, Roland Garros and U.S. Open ... Best Grand Slam singles results came at the Australian Open (2012) and U.S. Open (2011), where she reached the round of 16 ... Best doubles result came at the 2011 U.S. Open where she reached the semifinals (w/Nicole Gibbs) ... Finalist in doubles (w/Jennifer Brady) at Roehampton in 2012 ... Won six-straight matches to claim the title at the 2011 Easter Bowl, downing Gabrielle Andrews in the final 6-4, 6-4 ... Has also played in a number of professional tournaments as an amateur on the ITF Women's Circuit ... Won five straight-set matches to claim the singles title at a women's pro circuit event in Cleveland ... Also reached the quarterfinals in singles and the semifinals in doubles (w/Nicole Melichar) in Evansville ... Graduated from the Andrews Osborne Academy in Ohio.

► Personal

Born on April 5, 1994 in Willoughby, Ohio ... Parents are Tom and Stephanie ... Older siblings are Sean and Kristen ... Admires Roger Federer ... Hobbies include swimming, waterskiing, windsurfing and reading.





► Kaitlin RAY

Junior • 5-4 • Right-Handed
Little Rock, Ark.
Kaplan College Prep

► Career Singles Record

Year	Duals	Tournaments	Overall
2011-12	21-1	8-2	29-3
2012-13	5-1	10-4	15-5
Totals	26-2	18-6	44-8

► Career Doubles Record

Year	Duals	Tournaments	Overall
2011-12	3-0	5-5	8-5
2012-13	1-0	5-4	6-4
Totals	4-0	10-9	14-9

► 2012-13

First-Team All-Pac-12 Academic selection ... Listed at No. 113 in the Final ITA Singles Rankings ... Ranked as high as No. 38 during the season (Jan. 3) ... Finished the season with a 15-5 overall singles record ... Limited to just six dual matches due to injury ... Recorded a 5-1 mark in dual-match play, seeing most of her time at the Nos. 3-6 positions ... Played extensively during the fall, going 9-3 in three tournaments ... Reached the final at the Kramer Classic falling to Baylor's Emma Burgic, 6-2, 6-1 ... Also reached the semifinals at the USTA/ITA Southwest Regionals and the quarterfinals at the National Collegiate Tennis Classic.

► 2011-12

Ended the season listed at No. 117 in the Final ITA Singles Rankings ... Climbed to as high as No. 61 during the year (Feb. 16) ... Lost just three singles matches all year, finishing the season with a 29-3 overall record ... Went 21-1 in dual matches ... Entered the semifinals of the NCAA Team Championships with a perfect 21-0 dual-match record before suffering a loss to USC's Valeria Pulido ... Played mostly at the No. 6 singles position ... Also played eight matches at the No. 5 spot, going 8-0 ... Won her only match at the No. 4 position ... Played doubles in just three dual matches, teaming with Chanelle Van Nguyen to go 3-0 at the No. 3 spot ... Saw most of her doubles action in the fall, going 4-4 ... Posted a 6-2 record in fall singles play ... Won all three of her singles matches at the Mission Hills Tennis Classic ... Also won two rounds of singles at the USTA/ITA Southwest Regionals in San Diego ... Reached the finals in doubles (w/Carling Seguso) at the Kramer Tennis Classic, falling to teammates Pamela Montez and Skylar Morton, 9-7.

► High School / Juniors

Listed as a Blue Chip recruit (No. 7 overall) in the class of 2011 according to *TennisRecruiting.net* ... Ranked as high as No. 13 nationally in the USTA Girls' 18s ... Achieved a career-high ITF world junior ranking of No. 326 in 2010 ... Also ranked in the top 20 of the USTA Girls' 16s rankings in 2009 ... Claimed a USTA Silver Ball in doubles (w/Catherine Harrison) at the Spring Nationals in 2011 ... Quarterfinalist in doubles (w/Krista Hardebeck) at the 2010 Girls' 18s National Championships ... Singles runner-up at the Tampa National Open in 2011 ... Played two seasons at the Pulaski Academy in Little Rock, Ark. ... Captured two Arkansas state singles titles as a freshman and sophomore before moving to train full time at the Smith Stearns Tennis Academy in Hilton Head, S.C. ... Won four qualifying matches to earn a spot in the main draw of an ITF Women's Circuit event in Hilton Head in 2011.



► Personal

Full name is Kaitlin Mackenzie Ray ... Born on Dec. 15, 1992 in Little Rock, Ark. ... Parents are Joe and Debby ... Older sister is named Erin ... Admires Roger Federer ... Considers herself a big sports fan ... Enjoys watching SportsCenter ... Enjoys being outdoors, reading and watching college football in her spare time.



► Morgan THOMAS

Senior • 5-6 • Right-Handed
Rolling Hills, Calif.
Palos Verdes High School

► Career Singles Record

Year	Duals	Tournaments	Overall
2010-11	0-0	1-3	1-3
2011-12	1-0	6-4	7-4
2012-13	0-0	0-1	0-1
Totals	1-0	7-8	8-8

► Career Doubles Record

Year	Duals	Tournaments	Overall
2010-11	0-0	0-3	0-3
2011-12	0-0	3-2	3-2
2012-13	0-0	0-2	0-2
Totals	0-0	3-7	3-7

► 2012-13

Played her only singles match of the year while participating in the Invitational Draw at the Pac-12 Championships in Ojai, Calif., falling to Utah's Natasha Smith, 6-4, 6-4 ... Saw action in two tournaments in doubles, teaming with Holly Fleming at the prequalifying of the Riviera/ITA All-American Championships and in the Invitational Draw at the Pac-12 Championships.

► 2011-12

Made her dual-match debut against LMU on Feb. 2, downing Ana Lucia Fuentes, 6-3, 6-1 at No. 6 singles ... Other singles match of the spring came in the Invitational Draw at the Pac-12 Championships where she fell in three sets to Arizona's Debora Castany, 5-7, 6-2, 6-3 ... Teamed with Holly Fleming to reach the quarterfinals of doubles at the Pac-12 Championships (Invitational), downing Elisabeth Fournier and Charlotte Koning of Washington State, 8-2 in the opening round ... Registered a 6-3 mark in fall singles action ... Won all three of her singles matches at the Mission Hills Tennis Classic ... Also picked up a pair of consolation wins during play at the USTA/ITA Southwest Regionals ... Was 2-1 in fall doubles play with partner Holly Fleming.

► 2010-11

Defeated Washington's Adrijana Pavlovic, 6-2, 6-0 to reach the quarterfinals in singles at Pac-10 Championships (Invitational draw) ... Also participated in singles at the USTA/ITA Southwest Regional Championships ... Played three doubles matches in the fall with partner Megan Lester.

► High School / Juniors

Listed as a three-star recruit in the class of 2010 according to *TennisRecruiting.net* ... Four-year varsity letterwinner at Palos Verdes High School in Palos Verdes Estates, Calif. ... Played at No. 2 singles and at No. 1 doubles ... Team MVP and team captain all four years ... Four-time *Daily Breeze* first-team selection ... Helped Palos Verdes to the Bay League Championship all four years ... Also helped the team to four appearances in the CIF Semifinals ... Two-time Bay League doubles champion ... Twice reached the Bay League semifinals in singles.

► Personal

Full name is Morgan Renay Thomas ... Born on June 18, 1992 in Torrance, Calif. ... Parents are Mark and Paula Thomas ... Has two older sisters, Taylor and Shaunna ... Lists her biggest athletic thrill as knocking off the No. 6 seed at the 2008 Copper Bowl ... Admires WTA Tour professional Kim Clijsters ... Enjoys spending time with friends, and family, surfing and wakeboarding ... Once traveled to 30 countries in the span of 30 days ... Plans to major in Biology.





▶ Chanelle VAN NGUYEN

Junior • 5-2 • Right-Handed
Miami, Fla.
Kaplan K12

▶ Career Singles Record

Year	Duals	Tournaments	Overall
2011-12	20-4	3-1	23-5
2012-13	9-5	7-5	16-10
Totals	29-9	10-6	39-15

▶ Career Doubles Record

Year	Duals	Tournaments	Overall
2011-12	11-3	1-2	12-5
2012-13	5-3	5-4	10-7
Totals	16-6	6-6	22-12

▶ 2012-13

Finished the year ranked No. 115 in the Final ITA Singles Rankings ... Climbed to as high as No. 78 during the year (Feb. 12) ... Went 16-10 overall on the year in singles play ... Was 9-5 in dual matches playing mostly at the No. 4 position ... Highest ranked win of the season came over North Carolina's Zoe De Bruycker in the round of 16 at the Freeman Memorial Championships in Las Vegas, Nev. ... Missed the entire month of April due to an ankle injury suffered against Stanford on March 29 ... Went 10-7 overall in doubles play ... Was 5-3 in dual matches, teaming mostly with Kyle McPhillips at court No. 3 ... Also played several matches with Robin Anderson at No. 1 doubles.

▶ 2011-12

Did not compete in the fall ... Joined the team in January ... Won her first 16 dual matches, going undefeated in January and February ... Ended the season with a 23-5 overall singles record ... Lost just four dual matches on the year, going 20-4 ... Played mostly at the Nos. 4-6 positions ... Reached a season-high singles ranking of No. 78 on March 13 ... Defeated USC's Gabrielle DeSimone 4-6, 6-2, 6-3 at No. 5 singles on March 1, clinching a 4-3 victory for the top-ranked Bruins at No. 2 USC ... Posted two ranked singles wins on the year, downing No. 66 Mary Clayton of Duke and No. 103 Cecilia Estlander of Cal ... Went 12-5 overall in doubles ... Was 11-3 in dual matches ... Teamed with five different players, seeing action with Kaitlin Ray, Pamela Montez, Robin Anderson, Carling Seguso and McCall Jones.

▶ High School/Juniors

Singles finalist and doubles winner (w/Kyle McPhillips) at the 2011 U.S. International Grass Court Championships in Philadelphia ... Also reached the doubles final (w/McPhillips) at the 2011 ITF Easter Bowl in Palm Springs, Calif. ... Recorded a third-place showing in doubles (w/McPhillips) at the 2011 USTA Girls' 18s National Championships in San Diego ... Took home the 16s title at the 2008 Orange Bowl Junior Tennis Championships ... Singles finalist at the 2009 USTA Girls' 16s National Championships ... Reached a career-high ITF world ranking of No. 49 in January of 2011 ... Played in three of the four junior Grand Slams (Roland Garros, Wimbledon and U.S. Open) ... Singles winner at the 2010 Argentina Cup ... Has also played extensively on the ITF Women's Circuit ... Singles semifinalist in Evansville, Ind. ... Also captured the doubles title (w/ Kelsey Laurente) in Montego Bay in 2011.

▶ Personal

Born on Jan. 19, 1994 in Miami ... Parents are Tam and Letty ... Lists playing on stadium court at the U.S. Open as her greatest athletic thrill ... Admires Rafael Nadal ... Wanted to attend UCLA from a very young age ... Enjoys hanging out with friends in her spare time.





► Jennifer **BRADY**

Freshman • 5-9 • Right-Handed
Boca Raton, Fla.

► High School/Juniors

Rated a Blue Chip recruit by TennisRecruiting.net (rated as high as No. 3 nationally) ... Reached a career-high combined ranking of No. 36 in the ITF Junior World Rankings (10/29/2012) ... Appeared in three of the four Junior Grand Slams, seeing action at Roland Garros, Wimbledon and the U.S. Open ... Best showing at a Grand Slam came in 2012 at Roland Garros, where she reached the second round of singles and the round of 16 in doubles (w/Allie Klück) ... Semifinalist in singles at the International Spring Championships in 2012 ... Won the doubles title (w/Kendal Woodard) at the Eddie Herr Interna-

tional Championships in 2011 ... Singles finalist at the Evert American ITF in 2011 ... Delray Beach ITF singles champion in 2011 ... Plantation ITF doubles champion (w/Taylor Townsend) in 2011 ... Received her high school diploma from the Palm Beach Virtual School ... Did not play high school tennis.

► Personal

Full name is Jennifer Elizabeth Brady ... Born on April 12, 1995 in Harrisburg, Pa. ... Parents are Patrick and Elizabeth Brady ... Sister's name is Jessica ... Admires Roger Federer.



► Dominique **CETALE**

Freshman • 5-5 • Right-Handed
San Diego, Calif. / Francis W. Parker

► High School/Juniors

Attended Francis Parker High School in San Diego, Calif. ... Did not play high school tennis ... Semifinalist in singles at the USTA National Open 16s in Midland, Mich. (2009) ... Quarterfinalist at both the Roxy Junior Championships in Palm Springs, Calif. and the Copper Bowl in Tucson, Ariz. (2009) ... Attained a top 25 ranking in the SCTA Girls' 16s rankings ... Sportsmanship Award winner for the San Diego City Tennis Council ... Most Improved Player in the Girls' 16s by Youth Tennis San Diego ... Has also competed at the prestigious Easter Bowl Tennis Championships.

► Personal

Full name is Dominique Victoria Cetale ... Born on July 27, 1994 in San Diego, Calif. ... Parents are Jose and Kristine Cetale ... Younger brothers are Peter and Joseph ... Enjoys going to the movies, hanging out with friends and working out ... Admires Roger Federer ... Has Greek, Brazilian and Colombian ancestry.



► Allie **GLOVER**

Freshman • 5-5 • Right-Handed
Newport Beach, Calif. / Mater Dei

► High School/Juniors

Attended Mater Dei High School in Santa Ana, Calif. ... Tournament player who did not play high school tennis ... Participated for four years as a songleader ... Was also a member of the Mater Dei Choir Program for three years ... Sang in Carnegie Hall in New York City.

► Personal

Full name is Alejandra Pesquera Glover ... Born on May 17, 1995 in Newport Beach, Calif. ... Parents are Bruce and Lydiette Glover ... Younger sister is Gabriella ... Admires tennis professional Maria Sharapova.



► Kelly **SHAFFER**

Freshman • 5-5 • Right-Handed
San Diego, Calif. / Francis W. Parker

► 2014

Joined the Bruins in January after graduating early from high school.

► High School/Juniors

Three-time All-CIF performer at The Bishop's School in La Jolla, Calif. ... Only played three years of high school tennis after being home schooled her freshman year ... Listed as a four-start recruit according to TennisRecruiting.net ... Ended her high school career with a 103-10 overall singles record ... Twice named to the All-Academic Team ... Reached the semifinals in her section's singles tournament ... Received a wild card to compete in the qualifying draw at the WTA Tour's Southern California Open in Carlsbad in 2013, falling to former Florida standout

Allie Will, who was ranked top-300 in the world at the time ... Captured a USTA Silver Ball for reaching the singles final at the National Open Hard Court Championships San Diego in 2013 ... Also won a Gold Ball in mixed doubles at the National Open Grass Court championships in Newport, R.I.

► Personal

Full name is Kelly Christine Lee Shaffer ... Born on Feb. 21, 1996 in La Jolla, Calif. ... Parents are Jim and Tanya Shaffer ... Father played baseball and football at UC Santa Barbara ... Mother is a former professional ice skater ... Enjoys cooking and hanging out with friends and family ... Is fluent in French ... Lists playing in the Southern California Open as her greatest athletic thrill.

► 2013 Schedule/Results

Overall Record: 20-6 | **Pac-12 Record/Finish:** 7-3/4th
Final ITA Ranking: No. 7 (May 28)

Date	Opponent	Score
Jan. 26	#48 SAN DIEGO%	W, 4-0
Jan. 27	#47 WASHINGTON%	W, 4-0
Feb. 1	#65 UC IRVINE	W, 5-2
Feb. 8	vs. #21 Vanderbilt^	W, 4-1
Feb. 9	vs. #10 Miami^	W, 4-2
Feb. 10	vs. #6 Georgia^	W, 4-1
Feb. 11	vs. #8 North Carolina^	L, 3-4
Feb. 22	at #7 Cal	W, 4-3
Feb. 23	at #30 St. Mary's	W, 4-0
Feb. 29	at Pepperdine	W, 4-3
March 8	#12 USC	L, 2-4
March 15	#59 UTAH*	W, 6-1
March 16	COLORADO*	W, 6-1
March 22	at #60 Washington State*	W, 6-1
March 23	at #42 Washington*	W, 7-0
March 29	#14 STANFORD*	L, 3-4
March 30	#13 CAL*	L, 3-4
April 5	at #74 Arizona*	W, 5-2
April 6	at #22 ASU*	W, 5-2
April 12	at #64 Oregon*	W, 6-1
April 18	at #5 USC*	L, 1-6

NCAA Regionals (at Los Angeles, CA)

May 11	ARMY (1st Rd.)	W, 4-0
May 12	#28 OKLAHOMA ST. (2nd Rd.)	W, 4-0

NCAA Championships (at Champaign, Ill.)

May 17	vs. #10 Michigan (Rd. of 16)	W, 4-0
May 19	vs. #2 North Carolina (Quarterfinals)	W, 4-1
May 20	vs. #Texas A&M (Semifinals)	L, 3-4

* - Pac-12 Conference Match I % - Team Indoor Qualifying (Los Angeles)
 ^ - USTA/ITA National Team Indoors (Charlottesville, VA)

► All-Pac-12 Honors

First Team

Robin Anderson, UCLA
 Nicole Gibbs, STAN
 Danielle Lao, USC
 Sabrina Santamaria, USC
 Anett Schutting, Cal
 Zsofi Susanyi, Cal

Second Team

Kristie Ahn, STAN
 Jacqueline Cako, ASU
 Klara Fabikokva, Cal
 Krista Hardebeck, STAN
 Kyle McPhillips, UCLA
 Zoe Scandalis, USC

Honorable Mention

Tereza Bekerova, Utah; Lynn Chi, Cal; Lacey Smith, Utah,
 Sarah Pham, Utah

YEAR-END AWARDS

Player of the Year: Sabrina Santamaria, USC
 Doubles Team of the Year: Kaitlyn Christian/Sabrina Santamaria, USC
 Coach of the Year: Richard Gallien, USC
 Freshman/Newcomer of the Year: Kyle McPhillips, UCLA

► Singles Records

Player	#1	#2	#3	#4	#5	#6	Duals	Tour.	Overall
Robin Anderson	14-6	-	-	-	-	-	14-6	16-1	30-7
Courtney Dolehide	-	-	1-0	1-1	1-2	13-3	16-6	3-5	19-11
Holly Fleming	-	-	-	-	-	0-1	0-1	1-4	1-5
Catherine Harrison	-	-	2-0	2-2	14-2	-	18-4	7-4	25-8
Dylan Kirsch	-	-	-	-	-	-	0-0	0-1	0-1
Megan Lester	-	-	-	-	-	-	0-0	0-2	0-2
Kyle McPhillips	3-0	9-0	5-4	-	-	-	17-4	17-5	34-9
Pamela Montez	-	3-8	4-3	-	-	-	7-11	4-2	11-13
Skylar Morton	-	-	-	-	1-0	2-2	3-2	9-6	12-8
Kaitlin Ray	-	-	1-0	1-0	2-0	1-1	5-1	10-4	15-5
Morgan Thomas	-	-	-	-	-	-	0-0	0-1	0-1
Chanelle Van Nguyen	-	1-0	1-0	7-5	-	-	9-5	7-5	16-10
TOTALS	17-6	13-8	14-7	11-8	18-4	17-7	90-40	74-40	164-80

► Doubles Records

Players	#1	#2	#3	Duals	Tour.	Overall
McPhillips/Van Nguyen	-	-	4-1	4-1	3-3	7-4
Harrison/Ray	-	-	-	0-0	1-2	1-2
Fleming/Thomas	-	-	-	0-0	0-2	0-2
Anderson/Morton	7-8	-	-	7-8	7-1	14-9
Dolehide/Montez	-	12-4	-	12-4	5-3	17-7
Fleming/Ray	-	-	-	0-0	4-2	4-2
Kirsch/Lester	-	-	-	0-0	0-1	0-1
Anderson/Montez	-	-	-	0-0	5-3	5-3
Harrison/McPhillips	-	-	14-4	14-4	1-1	15-5
Morton/Van Nguyen	-	-	-	0-0	1-1	1-1
Dolehide/Harrison	-	1-0	-	1-0	0-1	1-1
McPhillips/Morton	1-2	-	-	1-2	3-0	4-1
Harrison/Van Nguyen	-	-	-	0-0	1-0	1-0
Anderson/Van Nguyen	1-2	-	-	1-2	0-0	1-2
Anderson/Dolehide	-	2-1	-	2-1	0-0	2-1
Harrison/Montez	-	1-0	1-1	2-1	0-0	2-1
Dolehide/Ray	-	-	1-0	1-0	0-0	1-0
Montez/Morton	0-1	-	-	0-1	0-0	0-1
TOTALS	9-13	16-5	20-6	45-24	31-20	76-44

► Indiv. Doubles Records

Robin Anderson	22-15
Courtney Dolehide	21-9
Holly Fleming	4-4
Catherine Harrison	20-9
Dylan Kirsch	0-1
Megan Lester	0-1
Kyle McPhillips	26-11
Pamela Montez	24-12
Skylar Morton	19-13
Kaitlin Ray	6-4
Morgan Thomas	0-2
Chanelle Van Nguyen	10-7

► vs. Ranked Singles Opp.

Robin Anderson	17-6
Courtney Dolehide	0-7
Holly Fleming	0-1
Catherine Harrison	4-3
Dylan Kirsch	0-0
Megan Lester	0-0
Kyle McPhillips	15-7
Pamela Montez	4-10
Skylar Morton	0-1
Kaitlin Ray	5-1
Morgan Thomas	0-2
Chanelle Van Nguyen	2-6

► Final Pac-12 Standings

Team	Pac-10 (Pct.)
1. USC*	10-0 (1.000)
2. Cal	9-1 (.900)
3. Stanford	8-2 (.800)
4. UCLA	7-3 (.700)
5. Arizona State	6-4 (.600)
6. Utah	5-5 (.500)
7. Washington	4-6 (.400)
8. Washington State	2-8 (.200)
Colorado	2-8 (.200)
10. Arizona	1-9 (.100)
11. Oregon	1-9 (.100)



* Receives conference's automatic bid to NCAA Tournament

► ITA Team Rankings

Final (May 28)	
1. Stanford	13. Clemson
2. Florida	14. Duke
3. Texas A&M	15. Virginia
4. North Carolina	16. Nebraska
5. Georgia	17. Texas
6. USC	18. Texas Tech
7. UCLA	19. Vanderbilt
8. Miami	20. Baylor
9. Cal	21. Georgia Tech
10. Michigan	22. Rice
11. Alabama	23. Notre Dame
12. Northwestern	24. Florida State
	25. Auburn





The 2013 Bruins reached the semifinals at the NCAA Championships in Champaign, Ill.

► #4 UCLA 4, #48 San Diego 0

Jan. 26 at Los Angeles Tennis Center

Doubles

1. #16 Anderson/Skylar Morton (UCLA) def. Blecher/Claus (USD) 8-3
2. Dolehide/Pamela Montez (UCLA) def. Depenau/Stojanovic (USD) 8-6
3. McPhillips/Van Nguyen (UCLA) def. Cara Brown/Hoffpaur (USD) 8-6

Singles

1. #16 Robin Anderson (UCLA) def. Stephanie Hoffpaur (USD) 6-1, 6-0
2. #47 Kyle McPhillips (UCLA) vs. Laura Claus (USD) Susp.
3. Chanelle Van Nguyen (UCLA) def. Shani Blecher (USD) 6-2, 6-4
4. #38 Kaitlin Ray (UCLA) vs. Anna Depenau (USD) Susp.
5. Catherine Harrison (UCLA) def. Marta Stojanovic (USD) 6-2, 6-1
6. Courtney Dolehide (UCLA) vs. Mikayla Morkel-Brink (USD) DNP

► #4 UCLA 4, #47 Washington 0

Jan. 27 at Los Angeles Tennis Center

Doubles

1. #16 Anderson/Morton (UCLA) def. Douglas/Shimizu (WASH) 8-1
2. Dolehide/Montez (UCLA) vs. Coronel/Ysidora (WASH) Susp.
3. McPhillips/Van Nguyen (UCLA) def. Lukac/Nemcevic (WASH) 8-3

Singles

1. #6 Robin Anderson (UCLA) def. #107 Grace Ysidora (WASH) 6-1, 6-0
2. #47 Kyle McPhillips (UCLA) vs. Andjela Nemcevic (WASH) Susp.
3. #38 Kaitlin Ray (UCLA) vs. Elinne Douglas (WASH) Susp.
4. Catherine Harrison (UCLA) def. Julija Lukac (WASH) 6-2, 6-1
5. Courtney Dolehide (UCLA) vs. Capucine Gregoire (WASH) Susp.
6. Skylar Morton (UCLA) def. Riko Shimizu (WASH) 6-1, 6-2

► #2 UCLA 5, #65 UC Irvine 2

Feb. 01 at Los Angeles Tennis Center

Doubles

1. #16 Robin Anderson/Morton (UCLA) def. Gong/Smith (UCI) 8-2
2. Dolehide/Harrison (UCLA) def. Mamiit/Stadfelt (UCI) 8-4
3. McPhillips/Van Nguyen (UCLA) def. Facey/Brooke Schwyer (UCI) 8-5

Singles

1. #47 Kyle McPhillips (UCLA) def. Kristina Smith (UCI) 6-4, 6-4
2. Chanelle Van Nguyen (UCLA) def. Marivick Mamiit (UCI) 7-5, 6-0
3. #38 Kaitlin Ray (UCLA) def. Fran Goettsching (UCI) 6-1, 7-5
4. Sarah Gong (UCI) def. Catherine Harrison (UCLA) 6-3, 3-6, (10-7)
5. Courtney Dolehide (UCLA) def. Ali Facey (UCI) 6-2, 6-3
6. Sarah Stadfelt (UCI) def. Skylar Morton (UCLA) 6-3, 6-1

► #2 UCLA 4, #21 Vanderbilt 1

Feb. 08 at Charlottesville, VA

Doubles

1. Colton/Mira (VU) def. #16 Anderson/Skylar Morton (UCLA) 8-7(3)
2. Dolehide/Montez (UCLA) def. Antal/Casares (VU) 8-7(4)
3. McPhillips/Van Nguyen (UCLA) def. Altick/Sellyn (VU) 8-4

Singles

1. #6 Robin Anderson (UCLA) def. Lauren Mira (VU) 6-0, 6-0
2. #47 K. McPhillips (UCLA) def. #102 C. Colton (VU) 6-2, 4-6, 6-0
3. #96 Pamela Montez (UCLA) def. #91 Marie Casares (VU) 6-4, 6-2
4. Chanelle Van Nguyen (UCLA) vs. Georgina Sellyn (VU) Susp.
5. Catherine Harrison (UCLA) vs. #115 Frances Altick (VU) Susp.
6. Ashleigh Antal (VU) def. Courtney Dolehide (UCLA) 6-3, 6-1

► #2 UCLA 4, #10 Miami 2

Feb. 09 at Charlottesville, VA

Doubles

1. Lileikite/Wagner (MIAMI) def. #16 Anderson/Morton (UCLA) 8-6
2. Courtney Dolehide/Montez (UCLA) vs. Bolivar/Laurent (MIAMI) Susp.
3. Albuquerque/Riobueno (MIAMI) def. McPhillips/Van Nguyen (UCLA) 8-4

Singles

1. #6 R. Anderson (UCLA) def. Monique Albuquerque (MIAMI) 6-0, 6-2
2. #47 Kyle McPhillips (UCLA) def. #57 Lina Lileikite (MIAMI) 6-0, 6-2
3. #96 Pamela Montez (UCLA) vs. #51 Kelsey Laurent (MIAMI) Susp.
4. Chanelle Van Nguyen (UCLA) def. Melissa Bolivar (MIAMI) 6-1, 6-2
5. C. Harrison (UCLA) def. #92 Stephanie Wagner (MIAMI) 7-6, 7-6
6. Clementina Riobueno (MIAMI) def. Skylar Morton (UCLA) 7-5, 6-4

► #2 UCLA 4, #6 Georgia 1

Feb. 10 at Charlottesville, VA

Doubles

1. Fuller/Garcia (UGA) def. #16 Anderson/Skylar Morton (UCLA) 8-4
2. Dolehide/Montez (UCLA) def. #22 Lilly Kimbell/Kowase (UGA) 8-5
3. Harrison/McPhillips (UCLA) def. Herring/King (UGA) 8-7 (8-6)

Singles

1. #6 Robin Anderson (UCLA) vs. #8 Lauren Herring (UGA) Susp.
2. #47 Kyle McPhillips (UCLA) vs. #18 Maho Kowase (UGA) Susp.
3. #96 Pamela Montez (UCLA) def. #54 Kate Fuller (UGA) 6-4, 6-3
4. Silvia Garcia (UGA) def. Chanelle Van Nguyen (UCLA) 6-1, 6-4
5. Catherine Harrison (UCLA) def. Mia King (UGA) 6-4, 6-0
6. Courtney Dolehide (UCLA) def. Makenzie Craft (UGA) 6-3, 6-0

► #8 North Carolina 4, #2 UCLA 3

Feb. 11 at Charlottesville, VA

Doubles

1. #16 Anderson/Skylar Morton (UCLA) def. #8 Ashley Dai/Kay (UNC) 8-6
2. Dolehide/Montez (UCLA) vs. De Bruycker/Suarez-Malaguti (UNC) Susp.
3. Harrison/McPhillips (UCLA) def. #51 Lyons/McHale (UNC) 8-4

Singles

1. #11 Gina Suarez-Malaguti (UNC) def. #6 R. Anderson (UCLA) 6-3, 6-4
2. #47 K. McPhillips (UCLA) def. #28 Z. De Bruycker (UNC) 6-3, 2-6, 6-2
3. #21 Whitney Kay (UNC) def. #96 P. Montez (UCLA) 6-2, 4-6, 7-6(5)
4. Chanelle Van Nguyen (UCLA) def. #111 Lauren McHale (UNC) 6-4, 6-0
5. #36 Caroline Price (UNC) def. Catherine Harrison (UCLA) 6-2, 2-6, 6-2
6. #101 Tessa Lyons (UNC) def. Courtney Dolehide (UCLA) 6-1, 6-4

► #2 UCLA 4, #7 California 3

Feb. 22 at Berkeley, CA

Doubles

1. Chi/Schutting (CAL) def. Anderson/Van Nguyen (UCLA) 9-7
2. #27 Fabrikova/Susanyi (CAL) def. #37 Dolehide/Montez (UCLA) 8-5
3. Davis/Laura Posykin (CAL) def. Harrison/McPhillips (UCLA) 9-8(7)

Singles

1. #6 Robin Anderson (UCLA) def. #30 Anett Schutting (CAL) 6-1, 6-0
2. #66 Lynn Chi (CAL) def. #56 Pamela Montez (UCLA) 6-1, 6-4
3. #42 K. McPhillips (UCLA) def. #113 K. Fabrikova (CAL) 6-3, 4-6, 7-5
4. Tayler Davis (CAL) def. #78 Chanelle Van Nguyen (UCLA) 1-6, 6-3, 6-4
5. #76 Catherine Harrison (UCLA) def. Kelly Chui (CAL) 6-2, 6-2
6. Courtney Dolehide (UCLA) def. Alice Duranteau (CAL) 6-1, 6-2

► #2 UCLA 4, #30 St. Mary's 0

Feb. 23 at Moraga, CA

Doubles

1. Anderson/Van Nguyen (UCLA) def. Flores/Jullien (SMC) 8-4
2. Isip/Searl (SMC) def. #38 Dolehide/Montez (UCLA) 8-4
3. Harrison/McPhillips (UCLA) def. Frampton/Audrey Leitz (SMC) 8-0

Singles

1. #6 Robin Anderson (UCLA) def. #24 Jenny Jullien (SMC) 6-2, 7-6(6)
2. Catherine Isip (SMC) vs. #56 Pamela Montez (UCLA) Susp.
3. Danielle Flores (SMC) vs. #42 Kyle McPhillips (UCLA) Susp.
4. Jade Frampton (SMC) vs. #78 Chanelle Van Nguyen (UCLA) Susp.
5. #76 Catherine Harrison (UCLA) def. Catherine Leduc (SMC) 6-2, 6-2
6. Courtney Dolehide (UCLA) def. Elizabeth Searl (SMC) 6-0, 6-6

► #3 UCLA 4, Pepperdine 3

Feb. 28 at Malibu, CA

Doubles

1. #15 Guillermo/Issara (PEP) def. Anderson/Van Nguyen (UCLA) 8-6
2. #58 Dolehide/Montez (UCLA) def. Capannolo/Granillo (PEP) 9-7
3. Harrison/McPhillips (UCLA) def. Moore/Tara Panu (PEP) 8-1

Singles

1. Lorraine Guillermo (PEP) def. #2 Robin Anderson (UCLA) 6-4, 6-2
2. #57 Khunpak Issara (PEP) def. #68 Pamela Montez (UCLA) 6-2, 6-1
3. Ale Granillo (PEP) def. #45 Kyle McPhillips (UCLA) 6-2, 6-2
4. #81 C. Van Nguyen (UCLA) def. Michaela Capannolo (PEP) 6-4, 6-2
5. #82 Catherine Harrison (UCLA) def. Megan Moore (PEP) 6-1, 7-5
6. Courtney Dolehide (UCLA) def. Abigail Phillips (PEP) 6-2, 6-2

► #12 USC 4, #3 UCLA 2

Mar. 08 at Los Angeles Tennis Center

Doubles

1. Anderson/Van Nguyen (UCLA) vs. #1 Christian/Santamaria (USC) Susp.
2. #58 Dolehide/Montez (UCLA) def. DeSimone/Scandalis (USC) 8-3
3. Harrison/McPhillips (UCLA) def. Lao/Olmos (USC) 8-3

Singles

1. #3 Sabrina Santamaria (USC) def. #2 Robin Anderson (UCLA) 6-1, 6-2
2. #7 Danielle Lao (USC) def. #68 Pamela Montez (UCLA) 7-5, 6-1
3. #26 Zoe Scandalis (USC) def. #45 Kyle McPhillips (UCLA) 6-3, 6-1
4. #84 G. DeSimone (USC) def. #81 C. Van Nguyen (UCLA) 0-6, 6-2, 6-3
5. #82 Catherine Harrison (UCLA) vs. #99 Giuliana Olmos (USC) Susp.
6. Courtney Dolehide (UCLA) def. Ellie Yates (USC) 6-0, 6-3 6-2, 6-2

2013 Match-By-Match Results

► #5 UCLA 6, #59 Utah 1

Mar. 15 at Los Angeles Tennis Center

Doubles

- #12 Anderson/Morton (UCLA) def. #21 Bekerova/Miles (UTAH) 8-6
- Najera-Salas/Smith (UTAH) def. #28 Dolehide/Montez (UCLA) 8-5
- Harrison/McPhillips (UCLA) def. Craig/Pham (UTAH) 8-1

Singles

- #5 Robin Anderson (UCLA) def. #70 Tereza Bekerova (UTAH) 6-1, 6-0
- Sarah Pham (UTAH) def. #86 Pamela Montez (UCLA) 5-7, 6-2, (10-8)
- #58 Kyle McPhillips (UCLA) def. Callie Craig (UTAH) 5-7, 6-2, (10-3)
- #95 Chanelle Van Nguyen (UCLA) def. Natasha Smith (UTAH) 6-1, 6-0
- #85 Catherine Harrison (UCLA) def. Lucia Kovarcikova (UTAH) 6-2, 6-3
- Courtney Dolehide (UCLA) def. Paige Miles (UTAH) 6-0, 6-4

► #5 UCLA 6, Colorado 1

Mar. 16 at Los Angeles Tennis Center

Doubles

- #12 Anderson/Skyler Morton (UCLA) vs. Sanders/Steuer (CU) Susp.
- #28 Dolehide/Montez (UCLA) def. Janssens/Manzi Tenorio (CU) 8-2
- Harrison/McPhillips (UCLA) def. Quevedo/Mattison Sperry (CU) 8-0

Singles

- #5 Robin Anderson (UCLA) def. Juliette Steuer (CU) 6-4, 7-5
- Winde Janssens (CU) def. #86 Pamela Montez (UCLA) 6-3, 5-7, (10-5)
- #58 Kyle McPhillips (UCLA) def. Dhany Quevedo (CU) 6-1, 6-1
- #95 Chanelle Van Nguyen (UCLA) def. Erin Sanders (CU) 6-0, 6-1
- #85 Catherine Harrison (UCLA) def. Carla Manzi Tenorio (CU) 6-1, 6-2
- Courtney Dolehide (UCLA) def. Mazy Watrous (CU) 6-1, 6-1

► #4 UCLA 6, #60 Washington State 1

Mar. 22 at Pullman, WA

Doubles

- #12 Anderson/Skyler Morton (UCLA) def. Google/Vasilieva (WSU) 8-2
- Kankaras/Musilovich (WSU) vs. #28 Dolehide/Montez (UCLA) Susp.
- Harrison/McPhillips (UCLA) def. Koning/Luzina (WSU) 8-6

Singles

- #5 Robin Anderson (UCLA) def. Liudmila Vasilieva (WSU) 6-1, 6-4
- #86 Pamela Montez (UCLA) def. Ksenia Google (WSU) 6-2, 6-2
- #58 Kyle McPhillips (UCLA) def. Elizaveta Luzina (WSU) 6-2, 6-2
- #95 C. Van Nguyen (UCLA) def. A. Kankaras (WSU) 6-4, 4-6, 1-0 Ret.
- Olga Musilovich (WSU) def. #85 Catherine Harrison (UCLA) 6-4, 6-3
- Courtney Dolehide (UCLA) def. Charlotte Koning (WSU) 6-4, 6-2

► #4 UCLA 7, #42 Washington 0

Mar. 23 at Seattle, WA

Doubles

- Douglas/Shimizu (WASH) def. #12 Anderson/Morton (UCLA) 8-3
- #28 Dolehide/Montez (UCLA) def. Coronel/Ysidora (WASH) 8-4
- Harrison/McPhillips (UCLA) def. Lukac/Nemcevic (WASH) 8-4

Singles

- #5 Robin Anderson (UCLA) def. Anđelja Nemcevic (WASH) 6-3, 6-1
- #86 Pamela Montez (UCLA) def. Grace Ysidora (WASH) 6-2, 6-1
- #58 Kyle McPhillips (UCLA) def. Elianne Douglas (WASH) 6-2, 6-0
- #95 Chanelle Van Nguyen (UCLA) def. Julija Lukac (WASH) 6-3, 6-0
- #85 Catherine Harrison (UCLA) def. Natali Coronel (WASH) 6-1, 6-0
- Courtney Dolehide (UCLA) def. Riko Shimizu (WASH) 6-2, 6-1

► #14 Stanford 4, #4 UCLA 3

Mar. 29 at Los Angeles Tennis Center

Doubles

- #14 Ahn/Gibbs (STAN) def. #13 Anderson/Skyler Morton (UCLA) 8-4
- #80 Tan/Tsay (STAN) def. #43 Dolehide/Montez (UCLA) 8-3
- Harrison/McPhillips (UCLA) def. Dillon/Hardebeck (STAN) 8-2

Singles

- #3 Robin Anderson (UCLA) def. #20 Nicole Gibbs (STAN) 6-4, 6-2
- #30 Kristie Ahn (STAN) def. #110 Pamela Montez (UCLA) 6-2, 6-0
- #14 Krista Hardebeck (STAN) def. #67 Kyle McPhillips (UCLA) 7-5, 6-1
- #93 Stacey Tan (STAN) def. #101 C. Van Nguyen (UCLA) 2-5, retired
- #91 Catherine Harrison (UCLA) def. #51 Ellen Tsay (STAN) 6-2, 6-2
- Courtney Dolehide (UCLA) def. Natalie Dillon (STAN) 7-6(6), 6-3

► #13 California 4, #4 UCLA 3

Mar. 30 at Los Angeles Tennis Center

Doubles

- #25 Chi/Schutting (CAL) def. #13 Anderson/Morton (UCLA) 8-5
- #43 Dolehide/Montez (UCLA) def. Duranteau/Fabikova (CAL) 8-2
- Kelly Chui/Davis (CAL) def. Harrison/McPhillips (UCLA) 8-5

Singles

- #3 Robin Anderson (UCLA) def. #6 Anett Schutting (CAL) 7-5, 6-3
- #59 Lynn Chi (CAL) def. #110 Pamela Montez (UCLA) 6-4, 6-1
- #80 Klahr Fabikova (CAL) def. #67 K. McPhillips (UCLA) 3-6, 6-1, 6-3
- #91 Catherine Harrison (UCLA) def. Tayler Davis (CAL) 6-2, 2-6, 6-2
- Annie Goransson (CAL) def. Courtney Dolehide (UCLA) 1-6, 6-3, 6-4
- #88 Kaitlin Ray (UCLA) def. Alice Duranteau (CAL) 6-4, 6-2

► #9 UCLA 5, #74 Arizona 2

Apr. 05 at Tucson, AZ

Doubles

- McPhillips/Morton (UCLA) def. Austin/Smyth (ARIZ) 8-4
- Robin Anderson/Dolehide (UCLA) def. James/Stubbe (ARIZ) 8-0
- Harrison/Montez (UCLA) def. Mc Rann/Oldham (ARIZ) 8-4

Singles

- Kyle McPhillips (UCLA) def. Lacey Smyth (ARIZ) 6-0, 7-5
- Kim Stubbe (ARIZ) def. Pamela Montez (UCLA) 6-0, 6-1
- Catherine Harrison (UCLA) def. Susan Oldham (ARIZ) 6-2, 7-6
- Akliah James (ARIZ) def. Courtney Dolehide (UCLA) 6-1, 1-6, 6-1
- Kaitlin Ray (UCLA) def. Shayne Austin (ARIZ) 7-5, 6-3
- Skyler Morton (UCLA) def. Susan Mc Rann (ARIZ) 5-7, 6-4, (10-8)

► #9 UCLA 5, #22 ASU 2

Apr. 06 at Tempe, AZ

Doubles

- #40 Cako/Nicole Smith (ASU) def. McPhillips/Morton (UCLA) 8-4
- Anderson/Dolehide (UCLA) def. Panoho/Smith (ASU) 8-6
- James/Sahagun (ASU) def. Harrison/Pamela Montez (UCLA) 8-5

Singles

- #23 Jacqueline Cako (ASU) def. #3 Robin Anderson (UCLA) 6-2, 6-3
- #67 Kyle McPhillips (UCLA) def. Leighann Sahagun (ASU) 6-3, 7-5
- #91 Catherine Harrison (UCLA) def. Hannah James (ASU) 6-3, 6-4
- Courtney Dolehide (UCLA) def. Joanna Smith (ASU) 6-4, 6-2
- #88 Kaitlin Ray (UCLA) def. Ebony Panoho (ASU) 6-0, 6-4
- UCLA wins by forfeit

► #6 UCLA 6, #64 Oregon 1

Apr. 12 at Eugene, OR

Doubles

- Long/Skowronski (UO) def. #36 McPhillips/Morton (UCLA) 8-7(3)
- Catherine Harrison/Montez (UCLA) def. Metzger/Neubert (UO) 8-4
- Dolehide/Ray (UCLA) def. Hager/Brooke Hughes (UO) 8-2

Singles

- #71 Kyle McPhillips (UCLA) def. Nicole Long (UO) 7-5, 6-4
- Pamela Montez (UCLA) def. Patricia Skowronski (UO) 6-4, 2-6, 6-0
- Courtney Dolehide (UCLA) def. Julia Metzger (UO) 1-6, 6-4, 6-4
- #96 Kaitlin Ray (UCLA) def. Sofia Hager (UO) 6-2, 6-1
- Skyler Morton (UCLA) def. Pascale Neubert (UO) 6-2, 7-5
- Lana Buttner (UO) def. Holly Fleming (UCLA) 6-1, 6-4

► #5 USC 6, #7 UCLA 1

Apr. 18 at Los Angeles, CA (Marks Tennis Stadium)

Doubles

- #2 Christian/Santamaria (USC) def. Montez/Morton (UCLA) 8-3
- Olmos/Scandalis (USC) def. Anderson/Dolehide (UCLA) 8-2
- DeSimone/Lao (USC) def. Harrison/McPhillips (UCLA) 7-6(1)

Singles

- #2 Sabrina Santamaria (USC) def. #3 Robin Anderson (UCLA) 6-1, 6-0
- #66 Kyle McPhillips (UCLA) def. #8 Danielle Lao (USC) 6-2, 6-4
- #30 Zoe Scandalis (USC) def. Pamela Montez (UCLA) 6-2, 6-1
- Giuliana Olmos (USC) def. #88 Catherine Harrison (UCLA) 7-6(5), 6-2
- #75 Gabriella DeSimone (USC) def. C. Dolehide (UCLA) 6-3, 6-4
- Kaitlyn Christian (USC) def. #90 Kaitlin Ray (UCLA) 2-6, 6-3, 6-4

► #7 UCLA 4, Army 0

May 11 at Los Angeles Tennis Center

Doubles

- Anderson/Van Nguyen (UCLA) vs. Della Taylor/Eile Taylor (ARMY) Susp.
- #38 Dolehide/Montez (UCLA) def. Colton/Paul (ARMY) 8-0
- Harrison/McPhillips (UCLA) def. Margaret Iliev/Pitman (ARMY) 8-0

Singles

- #3 Robin Anderson (UCLA) vs. Erin Colton (ARMY) Susp.
- #20 Kyle McPhillips (UCLA) def. Jamila Paul (ARMY) 6-0, 6-0
- Pamela Montez (UCLA) vs. Eva Sung (ARMY) Susp.
- #119 Chanelle Van Nguyen (UCLA) vs. Carolyn Pitman (ARMY) Susp.
- #93 Catherine Harrison (UCLA) def. Gabby Spindler (ARMY) 6-0, 6-0
- Courtney Dolehide (UCLA) def. Della Taylor (ARMY) 6-2, 6-0

► #7 UCLA 4, #28 Oklahoma State 0

May 12 at Los Angeles Tennis Center

Doubles

- #25 Anderson/Skyler Morton (UCLA) vs. #30 Narattana/Rose (OSU) Susp.
- #38 Dolehide/Montez (UCLA) def. Blevins/Lorena Gheorge (OSU) 8-6
- Harrison/McPhillips (UCLA) def. Alvarez/Sardinha (OSU) 8-4

Singles

- #3 Robin Anderson (UCLA) vs. #69 Malika Rose (OSU) Susp.
- #20 Kyle McPhillips (UCLA) vs. Meghan Blevins (OSU) Susp.
- Pamela Montez (UCLA) def. C.C. Sardinha (OSU) 6-2, 6-3
- #119 C. Van Nguyen (UCLA) vs. Kanyapat Narattana (OSU) Susp.
- #93 Catherine Harrison (UCLA) def. Maria Alvarez (OSU) 3-6, 6-1, 6-0
- Courtney Dolehide (UCLA) def. Karyn Guttormsen (OSU) 6-1, 7-5

► #7 UCLA 4, #10 Michigan 0

May 17 at Urbana, IL (Khan Outdoor Tennis Complex)

Doubles

- #6 Bektas/Bolender (MICH) def. #25 Anderson/Morton (UCLA) 8-6
- #38 Dolehide/Montez (UCLA) def. #90 Lee/Mimi Nguyen (MICH) 9-7
- Harrison/McPhillips (UCLA) def. Dodge/Yurovsky (MICH) 8-2

Singles

- #3 Robin Anderson (UCLA) def. #30 Emina Bektas (MICH) 6-3, 6-4
- #20 Kyle McPhillips (UCLA) def. #58 Ronit Yurovsky (MICH) 6-1, 6-2
- Pamela Montez (UCLA) vs. Brooke Bolender (MICH) Susp.
- Chanelle Van Nguyen (UCLA) vs. #99 Sarah Lee (MICH) Susp.
- #93 Catherine Harrison (UCLA) vs. Amy Zhu (MICH) Susp.
- Courtney Dolehide (UCLA) def. Kristen Dodge (MICH) 6-1, 6-0

► #7 UCLA 4, #2 North Carolina 1

May 19 at Urbana, IL (Khan Outdoor Tennis Complex)

Doubles

- #58 Kay/Price (UNC) def. #25 Anderson/Skyler Morton (UCLA) 8-4
- #38 Dolehide/Montez (UCLA) def. Ashley Dai/McHale (UNC) 8-1
- Lyons/Suarez-Malaguti (UNC) def. Harrison/McPhillips (UCLA) 8-1

Singles

- #3 R. Anderson (UCLA) def. #7 Gina Suarez-Malaguti (UNC) 7-5, 6-1
- #20 Kyle McPhillips (UCLA) def. #49 Zoe De Bruycker (UNC) 6-4, 6-1
- Pamela Montez (UCLA) def. #39 Whitney Kay (UNC) 6-4, 6-4
- #46 Caroline Price (UNC) vs. Chanelle Van Nguyen (UCLA) Susp.
- #93 C. Harrison (UCLA) def. Lauren McHale (UNC) 5-7, 7-5, 6-3
- Tessa Lyons (UNC) vs. Courtney Dolehide (UCLA) Susp.

► #3 Texas A&M 4, #7 UCLA 3

May 20 at Urbana, IL (Khan Outdoor Tennis Complex)

Doubles

- #25 Anderson/Morton (UCLA) def. #18 Hristov/Stancu (TAMU) 8-5
- #38 Dolehide/Montez (UCLA) vs. #49 Sanchez-Quintanar/Wen (TAMU) Susp.
- Harrison/McPhillips (UCLA) def. I. Deheza/Paula Deheza (TAMU) 9-7

Singles

- #4 C. Sanchez-Quintanar (TAMU) def. #3 R. Anderson (UCLA) 6-1, 6-3
- #20 K. McPhillips (UCLA) def. #68 C. Stancu (TAMU) 2-6, 6-0, 6-1
- #52 Nazari Urbina (TAMU) def. Pamela Montez (UCLA) 6-4, 6-2
- Ines Deheza (TAMU) def. C. Van Nguyen (UCLA) 6-3, 7-6(9), 6-4
- #93 Catherine Harrison (UCLA) def. Anna Mamalat (TAMU) 6-4, 6-2
- Stefania Hristov (TAMU) def. Courtney Dolehide (UCLA) 7-6, 6-1

All-Time Letterwinners



Amanda Basica

► A

Jessica Algazi 1984-85
Annemarie Amaral 1987
Robin Anderson 2012-13
Jody Anglin 1996-97

► B

Jenny Baker 1992-93
Penny Barg 1983
Colinne Bartel 1986-88
Amanda Basica 1998-00
Becky Bell 1978-80
Daniela Bercek 2004-05
Rene Blount 1978
Megan Bradley 2002
Andrea Bruno 1981-82

► C

Cindy Campbell 1980-82
Jackie Carleton 2003-04
Debbie Ceccato 1987
Mamie Ceniza 1989-92
Jane Chi 1993-95
Stephanie Chi 1995-96
Meredith Chiles 1993
Allyson Cooper 1985-88
Annica Cooper 1997-00

► D

Karen Dewis 1981-84
Jordan Dockendorf 2009
Courtney Dolehide 2011-13
Jennifer Donahue 1998-00
Jill Doty 1987
Kirsten Dreyer 1988-91
Becky Duesler 2007-08
Jeanne Duvall 1978



Karen Dewis

► E

Jessica Emmons 1988-90
Ferial Essegir 2003-04

► F

Lauren Fisher 2001-04
Holly Fleming 2012-13
Cammie Foley 1990-93
Brandi Freudenberg 1996-99
Mariko Fritz-Krockow 2001-02
Jennifer Fuchs 1986-87

► G

Kerry Gallant 1995-96
Barbara Gerken 1983
Dana Gilbert 1978-79
Chelsea Godbey 2001
Lara Goldt 1989
Laura Gordon 2003-06
Lucy Gordon 1979-80
Shannon Gordon 1978-79
Alyson Gray 1996-98
Shana Gray 1996-98
Sarah Gregg 2002-05



Cammie Foley

► H

Michelle Hain 1987
Catherine Harrison 2013
Catherine Hawley 2000-02
Ann Henricksson 1979
Noelle Hickey 2010-11
Jenny Hilt 1991-94
Stephanie Hoffpauir 2010
Kristy Howard 1994
Karin Huebner 1980-83
Patricia Hy 1984-86

► J

Jill Jablonow 1980-82
Michelle Jannone 1994-95
Stacey Jellen 1994
Ashley Joelson 2006-09
Maya Johansson 2009-11
Kate Jolson 2003-04
McCall Jones 2011-12
Shilpa Joshi 2003-04

► K

Kathrin Keil 1981-82
Dylan Kirsch 2013
Kati Kocsis 1997-98
Andrea Kriva 1983



Kati Kocsis

► L

Debbie LaFranchi 1989-91
Maria LaFranchi 1985-88
Lynn Lewis 1982-85
Megan Lester 2011-13
Andrea Lieberman 1989
Tracy Lin 2005-08
Anna-Viktoria Lind 2006-09
Anyia Loncaric 2003-05
Heather Ludloff 1982-83
Elizabeth Lumpkin 2005-08

► M

Anne Mall 1992
Helena Manset 1980-83
Petya Marinova 1999-02
Alysia May 1989
Iwalani McCalla 1989-92
Alex McGoodwin 2004-08
Kyle McPhillips 2013
Anicia Mendez 1993-96
Allegra Milholland 1990-91
Elizabeth Minter 1984
Pamela Montez 2010-13
Skylar Morton 2012-13
Jennifer Moyers 1987

► N

Beth Nicholson 1989

► O

Kathy O'Brien 1979-82
Kathy O'Daly 1995-97
Catherine O'Meara 1986-89
Wendy Ouwendijk 1987-88



Kathy O'Brien

► P

Nina Pantic 2009-11
Keri Phebus 1993-96
Kimberly Po 1990-91
Cristina Popescu 1998-01
Sara Poppelbaum 1982

► R

Becky Rajfer 1998
Amber Ray 2004-07
Kaitlin Ray 2012-13
Andrea Remynse 2008-11
Brittany Rosen 2008-09
LeeAnn Rostovsky 1992-93
Katia Roubanova 1997-99
Kelly Rudolph 1995-98

► S

Stella Sampras 1988-91
Elizabeth Schmidt 1997-00
Yasmin Schnack 2007-10
Carling Seguso 2009-12
Kathy Snelson 1978
Shelly Solomon 1981-82
Diana Spadea 1994-95
Abigail Spears 2000
Liz Stadler 1980-81
Susie Starrett 1994-95
Michelle Stiefel 2000-01

► T

Robin Tenny 1978
Jane Thomas 1984-87
Morgan Thomas 2011-13
Helen Tu 1991-93

► U

Joni Urban 1985-88

► V

Chanelle Van Nguyen 2012-13

► W

Angela Walker 1980
Sara Walker 2000-03
Karina Walters 1985
Stephanie Wetmore 2007-09
Susi Wild 2003
Jannell Wilkins 1987

► Y

Nina Yaftali 2003-04
Sarah Yang 2007-08
Paige Yaroshuk 1992-96

► Z

Riza Zalameda 2005-08
Zana Zlebnik 2000-01

All-Time Lineups

► 2013

1. Robin Anderson
2. Kyle McPhillips
3. Pamela Montez
4. Chanelle Van Nguyen
5. Catherine Harrison
6. Courtney Dolehide

1. Anderson/Morton
2. Dolehide/Montez
3. Harrison/McPhillips

► 2012

1. Robin Anderson
2. McCall Jones
3. Pamela Montez
4. Skylar Morton
5. Chanelle Van Nguyen
6. K. Ray or C. Seguso

1. Anderson/Morton
2. Dolehide/Montez
3. Jones/Seguso

► 2011

1. McCall Jones
2. Noelle Hickey
3. Andrea Remyense
4. Pamela Montez
5. Courtney Dolehide
6. Maya Johansson

1. Dolehide/Remyense
2. Hickey/Jones
3. Johansson/Montez

► 2010

1. Yasmin Schnack
2. Noelle Hickey
3. Andrea Remyense
4. Pamela Montez
5. Maya Johansson
6. Stephanie Hoffpauir

1. Remyense/Schnack
2. Hickey/Nina Pantic
3. Montez/Carling Seguso

► 2009

1. Yasmin Schnack
2. Andrea Remyense
3. Maya Johansson
4. Nina Pantic
5. Ashley Joelson
6. Carling Seguso

1. Remyense/Schnack
2. Seguso/Stephanie Wetmore
3. Joelson/Pantic

► 2008

1. Riza Zalameda
 2. Tracy Lin
 3. Yasmin Schnack
 4. Andrea Remyense
 5. Elizabeth Lumpkin
 6. Alex McGoodwin
1. Lin/Zalameda
 2. Lumpkin/Stephanie Wetmore
 3. McGoodwin/Schnack

► 2007

1. Riza Zalameda
2. Tracy Lin
3. Yasmin Schnack
4. Ashley Joelson
5. Alex McGoodwin
6. Elizabeth Lumpkin

1. Schnack/Zalameda
2. Joelson/McGoodwin
3. Lumpkin/Stephanie Wetmore

► 2006

1. Laura Gordon
2. Riza Zalameda
3. Tracy Lin
4. Alex McGoodwin
5. Ashley Joelson
6. Elizabeth Lumpkin

1. Gordon/Zalameda
2. Lumpkin/McGoodwin
3. Joelson/Lin

► 2005

1. Daniela Bercek
2. Riza Zalameda
3. Alex McGoodwin
4. Sarah Gregg
5. Tracy Lin
6. Laura Gordon

1. Bercek/Zalameda
2. Gordon/McGoodwin
3. Gregg/Lin

► 2004

1. Daniela Bercek
2. Jackie Carleton
3. Feriel Essegir
4. Sarah Gregg
5. Lauren Fisher
6. Laura Gordon

1. Bercek/Fisher
2. Carleton/Essegir
3. Gordon/Gregg

► 2003

1. Sara Walker
2. Jackie Carleton
3. Susi Wild
4. Sarah Gregg
5. Laura Gordon
6. Anya Loncaric

1. Gordon/Walker
2. Gregg/Wild
3. Carleton/Loncaric

► 2002

1. Megan Bradley
2. Sara Walker
3. Petya Marinova
4. Sarah Gregg
5. Lauren Fisher
6. Catherine Hawley

1. Marinova/Walker
2. Bradley/Fisher
3. Gregg/Hawley

► 2001

1. Sara Walker
2. Catherine Hawley
3. Lauren Fisher
4. Petya Marinova
5. Mariko Fritz-Krockow
6. Jennifer Donahue

1. Fisher/Marinova
2. Fritz-Krockow/Walker
3. Donahue/Hawley

► 2000

1. Sara Walker
2. Annica Cooper
3. Amanda Basica
4. Abigail Spears
5. Elizabeth Schmidt
6. Catherine Hawley

1. Basica/Walker
2. Schmidt/Spears
3. Cooper/Marinova

► 1999

1. Annica Cooper
2. Amanda Basica
3. Brandi Freudenberg
4. Elizabeth Schmidt
5. Petya Marinova
6. Rochelle Raiss

1. Cooper/Basica
2. Marinova/Popescu
3. Freudenberg/Roubanova

► 1998

1. Annica Cooper
2. Cristina Popescu
3. Elizabeth Schmidt
4. Kati Kocsis or Kelly Rudolph
5. Amanda Basica or Kocsis
6. Rudolph or B. Freudenberg

1. Roubanova/Schmidt
2. Cooper/Kocsis
3. Basica/Popescu

► 1997

1. Kati Kocsis
2. Elizabeth Schmidt
3. Annica Cooper
4. Kelly Rudolph
5. Katia Roubanova
6. Brandi Freudenberg

1. Roubanova/Schmidt
2. Cooper/Kocsis
3. Freudenberg/Rudolph

► 1996

1. Keri Phebus
2. Paige Yaroshuk
3. Stephanie Chi
4. Kelly Rudolph
5. Brandi Freudenberg
6. A. Mendez or J. Anglin

1. Phebus/Yaroshuk
2. Chi/Freudenberg
3. Rudolph/Mendez

► 1995

1. Jane Chi
2. Keri Phebus
3. Paige Yaroshuk
4. Stephanie Chi
5. K. Rudolph
6. A. Mendez or D. Spadea

1. Phebus/Susie Starrett
2. Chi/Chi
3. Yaroshuk/Spadea

► 1994

1. Jane Chi
2. Keri Phebus
3. D. Spadea or S. Starrett
4. Jenny Hilt
5. Stacey Jellen
6. Anicia Mendez

1. Phebus/Starrett
2. Chi/Hilt
3. Mendez/Jellen or Spadea

► 1993

1. Keri Phebus
2. Cammie Foley
3. Jenny Hilt
4. Jane Chi
5. Paige Yaroshuk
6. M. Chiles or L. Rostovsky

1. Phebus/Chi
2. Hilt/Yaroshuk
3. Foley/Chiles

► 1992

1. Mamie Ceniza
2. Iwalani McCalla
3. Anne Mall
4. Cammie Foley
5. P. Yaroshuk or L. Rostovsky
6. J. Hilt or J. Baker

1. Ceniza/McCalla
2. Baker/Mall
3. Foley/Yaroshuk

► 1991

1. Kimberly Po
2. Iwalani McCalla
3. Kirsten Dreyer
4. Stella Sampras
5. Mamie Ceniza
6. Cammie Foley

1. Sampras/Po
2. Ceniza/McCalla
3. Milholland/Dreyer

► 1990

1. Jessica Emmons
2. Mamie Ceniza
3. Kirsten Dreyer
4. Cammie Foley
5. Stella Sampras
6. Iwalani McCalla

1. Sampras/Ceniza
2. McCalla/Dreyer
3. Po/Emmons

► 1989

1. Jessica Emmons
2. Alysia May
3. Mamie Ceniza
4. Stella Sampras
5. Iwalani McCalla
6. K. Dreyer or C. O'Meara

1. Ceniza/Sampras
2. Emmons/May
3. Dreyer/McCalla

► 1988

1. Allyson Cooper
2. Jessica Emmons
3. Kirsten Dreyer
4. Stella Sampras
5. Joni Urban
6. M. LaFranchi or C. O'Meara

1. Sampras/Cooper
2. Urban/Emmons
3. Dreyer/LaFranchi or Bartel

► 1987

1. Jane Thomas
2. Joni Urban
3. Jennifer Fuchs
4. Allyson Cooper
5. Catherine O'Meara
6. Maria LaFranchi

1. Thomas/Fuchs
2. Cooper/Urban
3. LaFranchi/O'Meara

► 1986

1. Jane Thomas
2. Joni Urban
3. Jennifer Fuchs
4. Patricia Hy
5. Allyson Cooper
6. M. LaFranchi or C. O'Meara

1. Fuchs/Thomas
2. LaFranchi/Urban
3. Cooper/Bartel

► 1985

1. Lynn Lewis
2. Joni Urban
3. Jane Thomas
4. Allyson Cooper
5. Maria LaFranchi
6. Karina Walters

1. Thomas/Lewis
2. Urban/LaFranchi
3. Cooper/Algazi

► 1984

1. Elizabeth Minter
2. Patricia Hy
3. Lynn Lewis
4. Karen Dewis
5. Jane Thomas
6. Jessica Algazi

1. Lewis/Minter
2. Thomas/Dewis
3. Hy/Algazi

► 1983

1. Heather Ludloff
2. Barbara Gerken
3. Penny Barg
4. Karen Dewis
5. Andrea Kriva
6. K. Huebner or H. Manset

1. Ludloff/Gerken
2. Barg/Kriva
3. Manset/Davis

► 1982

1. Kathrin Keil
2. Heather Ludloff
3. Shelly Solomon
4. Lynn Lewis
5. Kathy O'Brien
6. Helena Manset

1. Ludloff/Lewis
2. O'Brien/Manset
3. Solomon/Keil

► 1981

1. Kathrin Keil
2. Kathy O'Brien
3. Shelly Solomon
4. Ann Henriksson
5. Karen Dewis
6. Liz Stadler

1. Manset/O'Brien
2. Henriksson/Dewis
3. Keil/Solomon

► All-Americans

Robin Anderson	2012-13
Amanda Basica	1999
Becky Bell	1979
Daniela Bercek	2004-05
Rene Blount	1978
Megan Bradley	2002
Jackie Carleton	2003-04
Mamie Ceniza	1989-90-91-92
Stephanie Chi	1995
Jane Chi	1994-95
Annica Cooper	1997-98-99
Courtney Dolehide	2012
Jeanne Duvall	1978
Jessica Emmons	1988-89
Lauren Fisher	2001-02
Cammie Foley	1993
Jennifer Fuchs	1986-87
Barbara Gerken	1983
Dana Gilbert	1978-79
Laura Gordon	2006
Shannon Gordon	1978-79
Ann Hendricksson	1979-81
Noelle Hickey	2010
Patricia Hy	1984
Kathrin Keil	1981-82
Kati Kocsis	1997
Andrea Kriva	1983
Lynn Lewis	1982-84-85
Tracy Lin	2007-08

Heather Ludloff	1982-83
Helena Manset	1982-83
Elizabeth Minter	1984
Petya Marinova	2001-02
Alysia May	1989
Iwalani McCalla	1991-92
Kyle McPhillips	2013
Pamela Montez	2012
Skylar Morton	2012-13
Kathy O'Brien	1979-80-81-82
Keri Phebus	1993-94-95-96
Kimberly Po	1991
Andrea Remynse	2009-10
Katia Roubanova	1997
Stella Sampras	1988-89-90-91
Elizabeth Schmidt	1997
Yasmin Schnack	2007-09-10
Paula Smith	1976-77
Shelly Solomon	1981-82
Diana Spadea	1994
Susie Starrett	1994-95
Cindy Thomas	1976
Jane Thomas	1985-86-87
Joni Urban	1985-87-88
Sara Walker	2000-01-02-03
Paige Yaroshuk	1996
Riza Zalameda	2005-06-07-08



Heather Ludloff (left) and Lynn Lewis won the 1982 NCAA Doubles Championship.



Susie Starrett



Jane Thomas

► Award Winners

ITA National Player of the Year

Year	Name
1995	Keri Phebus

ITA National Rookie of the Year

Year	Name
2002	Megan Bradley
2012	Robin Anderson

ITA Rookie of the Year (Southwest Region)

Year	Name
2001	Lauren Fisher
2003	Jackie Carleton
2012	Robin Anderson
2013	Kyle McPhillips

ITA National Coach of the Year

Year	Name
2012	Stella Sampras Webster

ITA Coach of the Year (Southwest Region)

Year	Name
1988	Bill Zaima
1989	Bill Zaima
1990	Bill Zaima

1995	Bill Zaima
1996	Bill Zaima
2000	Stella Sampras
2012	Stella Sampras Webster

ITA/Cissie Leary Sportsmanship Award

Year	Name
2006	Laura Gordon

ITA/Cissie Leary Sportsmanship Award (Southwest Region)

Year	Name
2002	Sara Walker
2006	Laura Gordon
2007	Elizabeth Lumpkin

ITA/Arthur Ashe Leadership Award (Southwest Region)

Year	Name
2008	Elizabeth Lumpkin

ITA National Intercollegiate Indoors Champions

Year	Name
1995	Jane Chi (S)
1995	Keri Phebus/Susie Starrett (D)

USTA/ITA National Indoors Sportsmanship Award

Year	Name
2003	Sara Walker

ITA National Assistant Coach of the Year

Year	Name
2000	Rance Brown
2010	Rance Brown
2012	Rance Brown

ITA Assistant Coach of the Year (Southwest Region)

Year	Name
1999	Rance Brown
2000	Rance Brown
2007	Rance Brown
2010	Rance Brown
2012	Rance Brown

ITA Senior Player of the Year

Year	Name
1996	Keri Phebus
2008	Riza Zalameda

ITA Senior Player of the Year (Southwest Region)

Year	Name
1996	Keri Phebus
2008	Riza Zalameda
2010	Yasmin Schnack

ITA Player to Watch

Year	Name
1993	Keri Phebus
2000	Sara Walker

UCLA Female Athlete of the Year

Year	Name
1995	Keri Phebus

Honda Award Winners

Year	Name
1978	Jeanne Duvall
1995	Keri Phebus

UCLA Athletics Hall of Fame

Year	Name
2007	Keri Phebus

Note: ITA awards are national honors unless otherwise indicated



The 2008 team captured the school's first Pac-10 Championship in women's tennis, ending the conference season with a 7-1 record.

All-Pac-12

Year	Name
1987	Jane Thomas
1988	Allyson Cooper
1989	Jessica Emmons
1990	Jessica Emmons
1991	Kimberly Po
1992	Mamie Ceniza
1993	Keri Phebus
1994	Jane Chi
1995	Keri Phebus
1995	Jane Chi, 1st
1996	Keri Phebus, 1st
1996	Paige Yaroshuk, 1st
1996	Stephanie Chi, 2nd
1997	Kati Kocsis, 1st
1997	Elizabeth Schmidt, 2nd
1998	Annica Cooper, 1st
1998	Cristina Popescu, 2nd
1999	Annica Cooper, 1st
1999	Amanda Basica, HM
1999	Cristina Popescu, HM
2000	Sara Walker, 1st
2000	Annica Cooper, 2nd
2000	Abigail Spears, HM
2001	Sara Walker, 1st
2002	Sara Walker, 1st
2002	Megan Bradley, 1st
2003	Sara Walker, 2nd
2003	Jackie Carleton, 2nd
2004	Daniela Bercek, 2nd
2004	Jackie Carleton, 2nd
2005	Daniela Bercek, 1st
2005	Riza Zalameda, 2nd
2006	Laura Gordon, 1st
2006	Riza Zalameda, 2nd
2006	Tracy Lin, HM
2007	Riza Zalameda, 1st
2007	Tracy Lin, 2nd
2007	Yasmin Schnack, 2nd
2008	Riza Zalameda, 1st
2008	Tracy Lin, 2nd
2008	Andrea Remyanse, HM
2009	Yasmin Schnack, 1st
2009	Andrea Remyanse, 2nd
2010	Yasmin Schnack, 1st
2010	Andrea Remyanse, 2nd
2010	Noelle Hickey, HM

2011	Noelle Hickey, HM
2011	Andrea Remyanse, HM
2012	Robin Anderson, 1st
2013	Robin Anderson, 1st
2013	Kyle McPhillips, 2nd

Pac-12 Singles Champions

Year	Name
1987	Jane Thomas
1995	Keri Phebus
1998	Annica Cooper
2000	Sara Walker
2008	Riza Zalameda
2010	Yasmin Schnack
2013	Kyle McPhillips

Pac-12 Doubles Champions

Year	Name
1989	Mamie Ceniza / Stella Sampras
1991	Kimberly Po / Stella Sampras
1996	Keri Phebus / Paige Yaroshuk
2001	Mariko Fritz-Krockow/Sara Walker
2007	Yasmin Schnack/Riza Zalameda
2010	Andrea Remyanse/Yasmin Schnack

Pac-12 Invitational Singles Champions

Year	Name
2006	Ashley Joelson
2008	Alex McGoodwin
2009	Carling Seguso
2010	Nina Pantic

Pac-12 Invitational Doubles Champions

Year	Name
2009	Maya Johansson/Anna-Viktoria Lind
2010	Stephanie Hoffpauir/Carling Seguso

Pac-12 All-Academic

Year	Name
1991	Kirsten Dreyer, 1st
1998	Kimberly Po, 2nd
1998	Annica Cooper, 1st
1999	Amanda Basica, 1st
1999	Annica Cooper, 1st
1999	Cristina Popescu, HM
1999	Katia Roubanova, HM
1999	Elizabeth Schmidt, HM

2000	Amanda Basica, 1st
2000	Annica Cooper, 1st
2000	Elizabeth Schmidt, 2nd
2002	Lauren Fisher, 2nd
2002	Catherine Hawley, HM
2004	Lauren Fisher, 1st
2004	Jackie Carleton, HM
2005	Alex McGoodwin, 1st
2005	Daniela Bercek, 2nd
2005	Laura Gordon, HM
2006	Sarah Gregg, HM
2006	Alex McGoodwin, 1st
2006	Tracy Lin, 2nd
2006	Elizabeth Lumpkin, 2nd
2006	Riza Zalameda, 2nd
2007	Laura Gordon, HM
2007	Tracy Lin, 1st
2007	Elizabeth Lumpkin, 1st
2007	Alex McGoodwin, 1st
2007	Riza Zalameda, 2nd
2008	Anna-Viktoria Lind, HM
2008	Tracy Lin, 1st
2008	Elizabeth Lumpkin, 1st
2008	Alex McGoodwin, 1st
2008	Riza Zalameda, 2nd
2009	Andrea Remyanse, 2nd
2009	Ashley Joelson, HM
2010	Andrea Remyanse, 1st
2010	Nina Pantic, HM
2011	Andrea Remyanse, 1st
2011	Maya Johansson, HM
2012	Courtney Dolehide, HM
2013	Kaitlin Ray, 1st
2013	Courtney Dolehide, HM

Pac-12 Player of the Year

Year	Name
1995	Keri Phebus
1998	Annica Cooper
2008	Riza Zalameda
2010	Yasmin Schnack

Pac-12 Doubles Team of the Year

Year	Name
2005	Daniela Bercek/Riza Zalameda
2008	Tracy Lin/Riza Zalameda
2010	Andrea Remyanse/Yasmin Schnack

Pac-12 Coach of the Year

Year	Name
1988	Bill Zaima
1991	Bill Zaima
2008	Stella Sampras Webster

Pac-12 Freshman of the Year

Year	Name
2000	Sara Walker
2002	Megan Bradley
2004	Daniela Bercek
2012	Robin Anderson
2013	Kyle McPhillips

Pac-12 Scholar-Athlete of the Year

Year	Name
2008	Riza Zalameda

Pac-12 Team Champions

Year	Coach
2008	Stella Sampras Webster

Note: Honors are Pac-10 through 2011. The Pac-12 was established in 2012.



UCLA defeated Cal, 4-0 in the 2008 NCAA Final in Tulsa, Okla.

► National Championships (2)

Year	Place (Organization)
1976.....	4th (AIAW)
1977.....	9th (AIAW)
1978.....	3rd (AIAW)
1979.....	4th (AIAW)
1980.....	6th (AIAW)
1981.....	1st (AIAW)
1982.....	2nd (NCAA)
1983.....	3rd (NCAA)
1984.....	5th (NCAA)
1985.....	9th (NCAA)
1986.....	9th (NCAA)
1987.....	5th (NCAA)
1988.....	3rd (NCAA)
1989.....	2nd (NCAA)
1990.....	3rd (NCAA)
1991.....	2nd (NCAA)
1992.....	T-5th (NCAA)
1993.....	T-9th (NCAA)

Year	Place (Organization)
1994.....	T-9th (NCAA)
1995.....	T-5th (NCAA)
1996.....	T-3rd (NCAA)
1997.....	T-5th (NCAA)
1998.....	T-9th (NCAA)
1999.....	T-17th (NCAA)
2000.....	T-5th (NCAA)
2001.....	T-9th (NCAA)
2002.....	T-5th (NCAA)
2003.....	T-5th (NCAA)
2004.....	2nd (NCAA)
2005.....	T-9th (NCAA)
2006.....	T-9th (NCAA)
2007.....	2nd (NCAA)
2008.....	1st (NCAA)
2009.....	T-9th (NCAA)
2010.....	T-9th (NCAA)
2011.....	T-3rd (NCAA)

► NCAA Singles Champions (1)

Year	Result
1995.....	Keri Phebus def. Kelly Pace (Texas), 6-2, 6-3

► NCAA Doubles Champions (6)

Year	Result
1982.....	Heather Ludloff/Lynn Lewis def. Kathy O'Brien/Helena Manset (UCLA), 6-4, 4-6, 7-6
1988.....	Stella Sampras/Allyson Cooper def. Ronnie Reis/Jami Yonekura (Miami), 4-6, 6-2, 6-4
1992.....	Mamie Ceniza/Iwalani McCalla def. Susan Gilchrist/Vickie Paynter (Texas), 6-4, 6-4
1995.....	Keri Phebus/Susie Starrett def. Cristina Moros/Kelly Pace (Texas), 6-3, 6-3
2004.....	Daniela Bercek/Lauren Fisher def. Jessica Johnson/Ashley Kroh (Marshall), 6-4, 6-4
2008.....	Tracy Lin/Riza Zalameda def. Melanie Gloria/Tinesta Rowe (Fresno St.), 6-2, 4-6, 6-3



Allyson Cooper (left) and Stella Sampras took home the NCAA Doubles title in 1989 at the Los Angeles Tennis Center.



Keri Phebus won the NCAA Singles and Doubles Championships (w/Susie Starrett) in 1995.



Tracy Lin (left) and Riza Zalameda won the 2008 NCAA Doubles title in Tulsa, Okla.



Daniela Bercek (left) and Lauren Fisher claimed the 2004 NCAA Doubles title in Athens, Ga.

► Bruins on the WTA Tour

Career-high WTA Tour Rankings as of Jan. 9, 2012.
Players are Listed in order of highest singles ranking (Top 500 only).

Name	Singles	Doubles
Kim Po-Messerli	14	6
Patricia Hy-Boulais	28	36
Dana Gilbert	46	NR
Barbara Gerken	55	45
Heather Ludloff	57	37
Jane Chi	62	178
Abigail Spears	66	11
Kathrin Keil	68	209
Paula Smith	87	75
Jessica Emmons	131	71
Keri Phebus	186	147
Jennifer Fuchs	206	113
Jane Thomas	244	106
Stella Sampras	248	142
Stephanie Chi	265	304
Karen Dewis	280	NR
Allyson Cooper	339	249
Iwalani McCalla	347	329
Yasmin Schnack	371	140
Elizabeth Schmidt	380	137
Lynn Lewis	425	295
Brandi Freudenberg	432	380
Elizabeth Lumpkin	443	280
Annica Cooper	464	379
Susie Starrett	491	292



Former Bruin Kimberly Po-Messerli (second from left) and her partner Nathalie Tauziat finished runner-up at the 2001 U.S. Open, falling to Lisa Raymond and Rennae Stubbs in the championship match.



Riza Zalameda



Abigail Spears



Barbara Gerken



Jane Chi

► Miscellaneous Singles Records

Most Wins Overall

Top 20 (Since 1991)

Name	Record
1. Keri Phebus	144-29
2. Annica Cooper	120-55
3. Sara Walker	115-43
4. Yasmin Schnack	106-43
5. Andrea Remynse	105-44
6. Elizabeth Lumpkin	101-41
7. Riza Zalameda	97-55
8. Tracy Lin	94-58
9. Kelly Rudolph	91-44
10. Jane Chi	89-24
11. Laura Gordon	87-56
12. Brandi Freudenberg	84-65
13. Ashley Joelson	83-57
14. Alex McGoodwin	81-46
15. Elizabeth Schmidt	79-71
16. Sarah Gregg	68-57
17. Robin Anderson	66-16
18. Paige Yaroshuk	65-66
19. Maya Johansson	63-32
20. Catherine Hawley	61-45

Most Wins at No. 1 Singles

Top 10 (Since 1991)

Name	Wins
1. Keri Phebus	51
2. Sara Walker	38
3. Riza Zalameda	36
4. Robin Anderson	33
5. Annica Cooper	29
6. Yasmin Schnack	28
7. Daniela Bercek	20
Jane Chi	19
9. Megan Bradley	15
10. Jackie Carleton	14
McCall Jones	14



Sara Walker

► Yearly Record (Since 1972)

Year	Record	National Finish	Conference Finish	Head Coach
1972	8-0	—	—	Bill Zaima
1973	8-1	—	—	Bill Zaima
1974	8-2	—	—	Bill Zaima
1975	16-5	—	—	Bill Zaima
1976	18-3	4th	1st (SCWIA)	Bill Zaima
1977	16-4	9th	2nd (WCAA)	Gayle Godwin
1978	23-4	3rd	2nd (WCAA)	Gayle Godwin
1979	21-3	4th	1st (WCAA)	Gayle Godwin
1980	21-10	6th	2nd (WCAA)	Gayle Godwin
1981	27-4	1st	2nd (WCAA)	Gayle Godwin
1982	29-4	2nd	1st (WCAA)	Gayle Godwin
1983	23-6	3rd	2nd (WCAA)	Gayle Godwin
1984	17-7	5th	4th (WCAA)	Gayle Godwin
1985	14-11	9th	4th (PacWest)	Gayle Godwin
1986	14-9	9th	T-4th (PacWest)	Gayle Godwin, Bill Zaima
1987	22-7	5th	2nd (Pac-10)	Bill Zaima
1988	20-6	3rd	3rd (Pac-10)	Bill Zaima
1989	21-5	2nd	2nd (Pac-10)	Bill Zaima
1990	23-7	3rd	3rd (Pac-10)	Bill Zaima
1991	23-5	2nd	2nd (Pac-10)	Bill Zaima
1992	16-8	T-5th	T-4th (Pac-10)	Bill Zaima
1993	8-14	T-9th	6th (Pac-10)	Bill Zaima
1994	15-8	T-9th	3rd (Pac-10)	Bill Zaima
1995	16-9	T-5th	4th (Pac-10)	Bill Zaima
1996	19-6	T-3rd	3rd (Pac-10)	Bill Zaima
1997	16-6	T-5th	2nd (Pac-10)	Stella Sampras
1998	17-11	T-9th	4th (Pac-10)	Stella Sampras
1999	18-8	T-17th	4th (Pac-10)	Stella Sampras
2000	17-9	T-5th	T-2nd (Pac-10)	Stella Sampras
2001	9-19	T-9th	7th (Pac-10)	Stella Sampras
2002	19-5	T-5th	3rd (Pac-10)	Stella Sampras Webster
2003	16-11	T-5th	5th (Pac-10)	Stella Sampras Webster
2004	21-8	2nd	3rd (Pac-10)	Stella Sampras Webster
2005	17-6	T-9th	3rd (Pac-10)	Stella Sampras Webster
2006	15-7	T-9th	4th (Pac-10)	Stella Sampras Webster
2007	21-8	2nd	T-2nd (Pac-10)	Stella Sampras Webster
2008	24-5	1st	T-1st (Pac-10)	Stella Sampras Webster
2009	19-7	T-9th	4th (Pac-10)	Stella Sampras Webster
2010	21-4	T-9th	2nd (Pac-10)	Stella Sampras Webster
2011	22-6	T-3rd	2nd (Pac-10)	Stella Sampras Webster
2012	26-3	2nd	T-3rd (Pac-12)	Stella Sampras Webster
2013	20-6	T-3rd	4th (Pac-12)	Stella Sampras Webster

TOTALS: 764-277 (.734) in 42 years / **Note:** W. tennis was elevated to varsity status in 1976

► All-Time Record vs. Opponents

Arizona	60-8	Florida	11-14
Arizona State	54-16	Florida State	1-0
Arkansas	2-0	Fresno State	12-1
Army	2-0	Georgia	4-7
Baylor	3-5	Georgia Tech	3-2
Boise State	2-0	Harvard	4-0
Boston College	1-0	Hawai'i	3-0
Boston University	2-0	Hawai'i-Pacific	1-0
Brown	1-0	Illinois	1-0
Brigham Young	5-2	Illinois State	1-0
Buffalo	1-0	Indiana	7-0
Cal	39-30	IUPUI	1-0
Cal Poly	5-0	Kansas	2-0
Cal State Bakersfield	1-0	Kentucky	3-0
Cal State Dominguez Hills	1-0	Long Beach State	29-0
Cal State Fullerton	21-0	Louisiana State	1-0
Cal State Los Angeles	4-0	Loyola Marymount	20-0
Cal State Northridge	7-0	Marquette	1-0
Clemson	6-3	Miami	10-4
Colorado	3-0	Michigan	2-0
Denver	1-0	Minnesota	2-0
Duke	5-3	Mississippi	1-1
Eastern Kentucky	1-0	New Mexico	0-1



The 1982 Bruins won the WCAA Conference title, advancing to their second-straight NCAA Final.



The 1991 UCLA team finished with a 23-5 overall record.



Led by All-American Keri Phebus, the 1996 Bruins tied for third at the NCAA Championships.

Notre Dame	4-0	Texas	9-10
North Carolina	4-2	Texas A&M	1-1
Northwestern	4-3	Trinity	9-8
Ohio State	0-1	Tulsa	1-0
Oklahoma	2-0	UC Davis	3-0
Oklahoma State	2-0	UC Irvine	39-2
Oregon	17-0	UC Riverside	1-0
Pacific	7-1	UC Santa Barbara	29-0
Pepperdine	52-13	UC San Diego	2-0
Princeton	1-0	UNLV	12-0
Quinnipiac	2-0	USC	46-47
Rice	3-0	US International	4-0
Rollins	1-1	Utah	12-0
Sacramento State	1-0	Vanderbilt	2-2
Saint Mary's	3-0	Virginia	1-0
San Diego	15-0	Wake Forest	1-0
San Diego State	26-7	Washington	21-2
Santa Clara	1-0	Washington State	19-1
South Alabama	1-1	Western Michigan	1-0
South Carolina	4-0	William & Mary	3-1
Southern	1-0	Wisconsin	4-0
Southern Methodist	3-1	Yale	2-0
Stanford	17-75		
Texas Christian	1-0		
Tennessee	3-0		



With the ability to hold more than 10,000 spectators, the Los Angeles Tennis Center is one of the nation's premier on-campus facilities.

► The Los Angeles Tennis Center

Located on the UCLA campus nestled just west of Pauley Pavilion and south of Drake Stadium is the impressive Los Angeles Tennis Center: home to both UCLA men's and women's tennis teams.

The LATC was the first large-scale outdoor tennis stadium opened in the Los Angeles metropolitan area and was officially dedicated on May 20, 1984, just in time to host the 1984 NCAA Women's Tennis Championships and the 1984 Olympic Games. Since then, the LATC has been site of several top collegiate and professional tournaments. The NCAA Women's Tennis Championships returned to the LATC in 1987 and '88, while the NCAA Men's Tennis Championships called the LATC home in 1997.

On the professional level, the LATC has been a regular stop of the ATP Tour for many years. The first tournament held at the LATC, the Union 76 Pacific Southwest Open, featured former Bruins Jimmy Connors and Eliot Teltscher in the finals. The tournament, renamed The LA Open, continues to thrive at the LATC each summer.

The LATC features eight lighted, hard-surface courts, a 5,800-permanent seat grandstand around the three main courts and a two-level clubhouse. At full capacity, the LATC can accommodate more than 10,000 spectators. The clubhouse contains locker rooms, coaches' offices and team rooms for both the UCLA men's and women's teams, as well as offices for the Southern California Tennis Association (SCTA).

The second level of the clubhouse features a 4,000-square foot indoor dining area and kitchen. Center court is called the Times-Mirror Center Court. The stadium is named the Straus Stadium and Clubhouse.

A recent addition to the LATC came in 2005 when the Greiner Family Scoreboard was added to the back courts. Prior to that, the Budge Offer Family Scoreboard was added to the stadium courts in 2000. Both scoreboards enable fans to follow the action on every court from either location.

The newest project at the LATC was completed in January of 2010, as both the men's and women's teams received a complete renovation of their locker rooms.



The front entrance to the Los Angeles Tennis Center.



In addition to the three stadium courts, the LATC features five back courts.



The men's and women's locker rooms were renovated in 2010.

Administrator Biographies



Dan Guerrero

Athletic Director
12th Year

In 11 years, Dan Guerrero has clearly established a pattern of "image and substance" that few in his profession can match.

UCLA has won 109 NCAA team championships, a figure unmatched by any institution in the nation. UCLA teams have won 23 NCAA championships since his appointment, another national leader, finished second 21 times and have enjoyed an additional 43 Top Five finishes.

More than 80% of UCLA teams have qualified for NCAA post-season competition since 2002. The football team has appeared in nine bowl games and the men's basketball team advanced to consecutive Final Fours from 2006-08.

This past year in NCAA competition, UCLA won its 109th NCAA title when the baseball team captured its first College World Series title, and eight teams finished among the Top 5 nationally. Men's water polo and men's tennis finished second, women's water polo and women's tennis (tied) placed third, women's golf and women's gymnastics finished fourth and women's soccer tied for fifth. Finally, 57 student-athletes earned All-America honors and 57 were selected to various all-conference teams.

Guerrero came to UCLA from UC Irvine, where he had served as UCI's fifth permanent Director of Athletics for 10 years (1992-2002). During his tenure, the program accumulated conference championships, garnered national rankings, featured graduation rates among the nation's best, and won numerous post-season honors for its student-athletes.

Prior to arriving at UC Irvine, Guerrero worked at Cal State Dominguez Hills, where he led that program to national prominence while serving as Athletic Director for five years (1988-92).

Guerrero received his Bachelor's degree from UCLA in 1974 and played second base for the Bruins for four years. The Bruin Athletic Director earned a Master's degree in Public Administration in 1982 from Cal State Dominguez Hills and was named to the Pi Alpha Alpha Honor Society for Public Affairs and Public Policy that same year.

Guerrero, 61, was raised in Wilmington, CA. He is married to the former Anne Marie Aniello and they have two grown daughters.



Glenn Toth

Sr. Assoc. Athletic Director
17th Year

Glenn Toth, who has served the athletic department as an administrator for more than 35 years, enters his 17th year in charge of the UCLA men's and women's tennis programs. He is in his fifth year overseeing the men's volleyball team, the men's and women's cross-country teams, and the men's and women's track & field teams. In addition to his role as a sports supervisor, Toth has also seen duty as an assistant coach, and serves as a member of athletic director Dan Guerrero's senior staff.

A senior associate athletic director with a variety of responsibilities, Toth serves as the liaison with shoe and apparel sponsor adidas, having orchestrated both the original 1999 agreement renewals in 2004 and 2010. adidas supplies all Bruin teams, and represents the department's most lucrative sponsorship. In addition, Toth was point person on the negotiation with International Sports Properties (ISP) which now handles the department's corporate relations, media rights, program printing, web page, ad sales, and sponsor promotions.

Toth also has administrative responsibility for the athletic equipment room which designs, outfits, and maintains all of the Bruins' uniforms, practice, and playing equipment. In addition, the sports medicine area/athletic training room, which provides injury evaluation, treatment, rehabilitation, therapy, and nutritional services to over 700 student-athletes, falls under Toth's supervision, as does the sports performance area and its seven full-time strength coaches.

Toth graduated from UCLA in 1976 with a degree in economics. From 1978-84, he supervised the management of home athletic events, team travel, and athletic insurance. In 1982, Toth handled the logistics of UCLA's move to the Rose Bowl and at the same time became the athletic department's first marketing director.

An avid hiker and climber, Toth completed a personal seven-summit ambition by climbing west coast giants Whitney, Rainier, Shasta, Hood, Adams, Baker, and Jefferson. Toth serves as a Reserve Deputy with the LA County Sheriff's Department, formerly in patrol and now in search & recovery. His golden retrievers are Misty and Dottie.



Dr. Gene Block

Chancellor
8th Year

As UCLA's chief executive officer, Gene Block oversees all aspects of the campus' three-part mission of education, research and service.

A champion of public universities, Chancellor Block serves on several leading national associations and advisory boards, including as chair of the council of presidents of the Universities Research Association, an international consortium of 86 leading research universities.

Chancellor Block holds UCLA faculty appointments in psychiatry and biobehavioral sciences in the David Geffen School of Medicine and in physiological science in the College of Letters and Science. A fellow of the American Association for the Advancement of Science and a member of the American Academy of Arts and Sciences, he specializes in circadian biology, which deals with the functioning of 24-hour rhythms in higher organisms.

Dr. Block became chancellor of UCLA on August 1, 2007. Previously, he served as vice president and provost of the University of Virginia, where he held the Alumni Council Thomas Jefferson Professorship in Biology and directed the National Science Foundation's Science and Technology Center for Biological Timing. He also headed an NIH graduate training program aimed at increasing the number of scientists from underrepresented groups.

Chancellor Block joined the faculty of the University of Virginia in 1978. He served as vice provost for research from 1993 to 1998 and then as vice president for research and public service until his appointment as vice president and provost in 2001. In 1998, he received the Commonwealth of Virginia's Outstanding Public Service Award for his work with Virginia's business community.

A native of Monticello, New York, Chancellor Block holds a bachelor's degree in psychology from Stanford University and a master's and Ph.D. in psychology from the University of Oregon. He completed a postdoctoral fellowship at Stanford, studying with Colin Pittendrigh, "the father of biological timing," and Donald Kennedy, who later served as president of Stanford.

Chancellor Block and his wife, Carol, have two children.

► Women's Tennis Support Staff



Matt Elliott
Compliance



Donald Morrison
Faculty Athletic Rep.



Paul Brown
Event Management



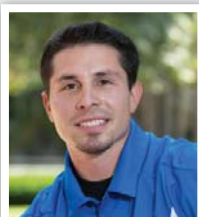
Linda Lassiter
Academic Counseling



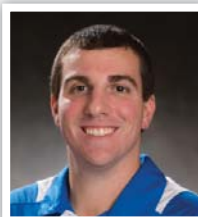
Megan Lester
Team Manager



Danny Harrington
Sports Information



Bobby Andrade
Athletic Performance



Brandon Desantis
Athletic Training



Tom Solomon
Event Staff

Academic & Student Services (AS2)

Mission Statement: S.U.C.C.E.S.S.

“Student-athletes Understand that Character Creates Educational Self-Sufficiency”

The mission of the UCLA Academic & Student Services office (AS2) and its S.U.C.C.E.S.S. Program is to provide an interactive learning environment that emphasizes life-long learning habits, goal setting, teamwork, leadership and character. Centered on the idea of the self-sufficient, independent learner, the S.U.C.C.E.S.S. Program features academic counseling, academic and student support services, and student-athlete development programs that support and encourage student-athletes to reach their full potential academically and personally.

The AS2 team promotes a healthy balance between academics and athletics and embraces UCLA's "True Bruin" philosophy setting forth the ethical standards of integrity, excellence, accountability, respect and service. Our commitment is to assist student-athletes in their transition to the university, earning their UCLA degree, and develop their skills and confidence to be champions in life.



Academic & Student Services Staff

Dr. Christina Rivera – Associate Athletic Director, Academic & Student Services
Mike Casillas – Director, Student-Athlete Counseling & Athletics Peer Learning
Tim Anderson – Associate Director, Academic & Student Services
Kevin Chen – Academic Counselor
Lisa Chow – Staff Associate
Ric Coy – Associate Director, Academic & Student Services
Ja'Nae Davis – Manager, Athletics Peer Learning Lab
Rachel DeShong – Office Assistant, Athletics Peer Learning Lab
Angie Dolan – Assistant Learning Specialist
Andrea Fisher – Learning Specialist
Jo Guest – Program Assistant, Athletics Peer Learning Lab
Linda Lassiter – Academic Counselor
Grace Murray – Learning Specialist
Joanne Suechika – Academic Counselor
Nick Thornton – Eligibility Coordinator
Sabrina Youmans – Senior Learning Specialist

UCLA's

Academic & Student Services Office

ACADEMIC COUNSELING

- Program Planning & Course Selection
- Degree Progress Report Checking
- Priority Enrollment
- Major Exploration
- Graduate & Professional School Referrals
- Academic Difficulty Counseling

ACADEMIC SUPPORT SERVICES

- Academic Mentoring
- Peer Learning Sessions
- Learning Specialists
- Midterm Progress Reports
- Learning Strategies & Educational Assessments
- Summer Bridge Program

STUDENT SUPPORT SERVICES

- Orientation Programs
- Academic Travel Coordinator
- Learning Center Computer Lab
- Scholar-Athlete Banquet
- Bruin Athletics Graduation Celebration
- Awards & Postgraduate Scholarships
- Student-Athlete Assistance Fund

STUDENT-ATHLETE DEVELOPMENT

- Personal Development
(Health Education, Life Skills Workshops & Team Building)
- Wooden Academy: Teamwork, Leadership & Character
- Bruin Athletic Council (BAC)
- Student-Athlete Mentors (SAMS)
- Community Outreach
- Professional Development
(Career Exploration, Internships, Resume & Interviewing Skills)



UCLA-NCAA Postgraduate Scholarship Winners (68)



Alaizah Koorji
Rowing, 2011



Andrea Remyense
Tennis, 2011



Kyle Shackleton
Track/CC, 2009



Drew Shackleton
Track/CC, 2009



Chris Joseph
Football, 2008

NCAA Postgraduate Scholarship Winners (68)

Football (18)

1966-67 Ray Armstrong*
1966-67 Dallas Grider
1969-70 Greg Jones
1973-74 Steve Klosterman
1975-76 John Sciarra
1976-77 Jeff Dankworth
1977-78 John Fowler
1982-83 Cormac Carney
1983-84 Rick Neuheisel
1985-86 Mike Hartmeier
1989-90 Rick Meyer
1992-93 Carlton Gray
1995-96 George Kase
1998-99 Chris Sailer
Shawn Stuart
1999-00 Danny Farmer
2007-08 Chris Joseph
2012-13 Jeff Locke

Men's Gymnastics (1)

1991-92 Scott Keswick

Men's Soccer(1)

1997-98 Josh Keller

Men's Basketball (5)

1968-69 Kenny Heitz
1970-71 Terry Schofield
1979-80 Kiki Vandeweghe
1992-93 Richard Petruska
1994-95 George Zidek*

Men's Swimming (8)

1975-76 Tim McDonnell
1978-79 Dan Stephenson
1984-85 Bruce Hayes
1984-85 Pat Thomas
1985-86 Steve Martz
1986-87 Brian Jones
1991-92 Andrea Cecchi
1992-93 David Fleck (diving)

Men's Tennis (1)

1995-96 Srdjan Muskatirovic

Men's Track and Field (5)

1977-78 Willie Banks
1994-95 John Godina
1997-98 Josh Johnson
2008-09 Drew & Kyle Shackleton

Men's Volleyball (4)

1970-71 Ed Machado
1981-82 Karch Kiraly
1986-87 Asbjorn Volstad
1996-97 Trong Nguyen*

Men's Water Polo (4)

1982-83 Brian Black
1995-96 Thomas Wong
1999-00 Parsa Bonderson
2000-01 Sean Kern

Women's Basketball (1)

1985-86 Anne Dean

Women's Golf (1)

1985-86 Kay Cockerill

Women's Gymnastics (4)

1989-90 Jill Andrews
2002-03 Kristin Parker
2002-03 Onnie Willis
2005-06 Kate Richardson

Women's Rowing (1)

2010-11 Alaizah Koorji

Softball (2)

1992-93 Lisa Fernandez
1994-95 Jennifer Brundage

Women's Swimming (5)

1995-96 Annette Salmeen
1999-00 Keiko Price
2000-01 Brigid Dwyer
2001-02 Katie Younglove
2003-04 Kristen Lewis

Women's Tennis (2)

1983-84 Karen Dewis
2010-11 Andrea Remyense

Women's Track and Field (3)

1996-97 Amy Acuff
1997-98 Nada Kawar
2006-07 Jacqueline Nguyen

Women's Volleyball (2)

1993-94 Julie Bremner
2000-01 Elisabeth Bachman

*Alternate Selections

Capital One

All-American Hall of Fame (8)

1988 Donn Moomaw, FB
1990 Jamaal Wilkes, BB
1994 Bill Walton, BB
1994 Coach John Wooden, BB
1999 John Fowler, BB
2005 Cormac Carney, FB
2009 Karch Kiraly, VB
2011 Julie Bremner-Romias, VB

NCAA Silver Anniversary Award (8)

1978 Rev. Donn Moomaw, Football '53
1981 Willie Naulls, Basketball '56
1994 Kareem Abdul-Jabbar, Basketball '69
1999 Bill Walton, Basketball '74
2003 Ann Meyers, Basketball '78
2008 Dot Richardson, Softball, '82
Cormac Carney, Football, '82
2010 Jackie Joyner-Kersey, BB-Track, '85

Rhodes Scholarships (5)

1925 John Olmsted, Tennis
1962 William Zeltonoga, Wrestling
1969 Harold Griffin, Football
1996 Annette Salmeen, Swimming
2008 Chris Joseph, Football

NCAA Theodore Roosevelt Award (4)

1977 Tom Bradley, Former LA Mayor
1984 Rafer Johnson, Calif. Special Olympics
1996 John Wooden, Former UCLA BB Coach
2003 Donna de Varona, Commission on Title IX

NCAA Top Eight Award (14)

1975-76 John Sciarra, FB
1976-77 Jeff Dankworth, FB
1981-82 Karch Kiraly, VB
1982-83 Cormac Carney, FB
1988-89 Carnell Lake, FB
1989-90 Jill Andrews, GYM
1992-93 Carlton Gray, FB
1992-93 Scott Keswick, GYM
1993-94 Lisa Fernandez, SB
1993-94 Julie Bremner, VB
1996-97 Annette Salmeen, SW
2001-02 Stacey Nuveman, SB
2003-04 Onnie Willis, GYM
2006-07 Kate Richardson, GYM

UCLA Undergraduate Majors and Minors

COLLEGE OF LETTERS AND SCIENCE

African Languages
Afro-American Studies
American Indian Studies
American Literature and Culture
Ancient Near Eastern Civilizations
Anthropology
Arabic
Art History
Asian American Studies
Asian Humanities
Asian Religions
Astrophysics
Atmospheric, Oceanic and Environmental Sciences
Biochemistry
Biology
Biophysics
Business Economics¹
Central and East European Languages and Cultures
Chemistry
Chemistry, General²
Chemistry/Materials Science
Chicana and Chicano Studies
Chinese
Classical Civilization
Cognitive Science¹
Communication Studies³
Comparative Literature
Computational and Systems Biology¹
Earth and Environmental Science
East Asian Studies
Ecology, Behavior, and Evolution
Economics¹
English
Environmental Science
European Studies
French
French and Linguistics
Geography
Geography/Environmental Studies
Geology
Geology/Engineering Geology
Geology/Paleobiology
Geophysics/Applied Geophysics
Geophysics/Geophysics and Space Physics
German
Global Studies¹
Greek
Greek and Latin
Hebrew
History¹
Human Biology and Society¹
International Development Studies¹
Iranian Studies
Italian
Italian and Special Fields
Japanese
Jewish Studies
Korean
Latin
Latin American Studies

Linguistics
Linguistics, Applied
Linguistics and Anthropology
Linguistics and Asian Languages and Cultures
Linguistics and Computer Science
Linguistics and English
Linguistics and French
Linguistics and Italian
Linguistics and Philosophy
Linguistics and Psychology
Linguistics and Scandinavian Languages
Linguistics and Spanish
Marine Biology
Mathematics
Mathematics, Applied
Mathematics/Applied Science
Mathematics/Atmospheric and Oceanic Sciences
Mathematics/Economics
Mathematics for Teaching
Mathematics of Computation
Microbiology, Immunology, and Molecular Genetics¹
Middle Eastern and North African Studies
Molecular, Cell, and Developmental Biology
Music History
Neuroscience
Philosophy
Physics
Physiological Science
Political Science¹
Portuguese
Psychobiology¹
Psychology¹
Religion, Study of
Russian Language and Literature
Russian Studies
Scandinavian Languages and Cultures
Sociology¹
Southeast Asian Studies
Spanish
Spanish and Community and Culture
Spanish and Linguistics
Spanish and Portuguese
Statistics
Women's Studies
Individual Field of Concentration²
Undeclared—Humanities⁴
Undeclared—Life Sciences⁴
Undeclared—Physical Sciences⁴
Undeclared—Social Sciences⁴

SCHOOL OF THE ARTS AND ARCHITECTURE

Architectural Studies³
Art
Design | Media Arts
Ethnomusicology
[Jazz Studies, World Music]
Music
[Composition, Performance, Music Education]

World Arts and Cultures
[Dance, World Arts and Cultures]
Individual Field of Concentration²

HENRY SAMUEL SCHOOL OF ENGINEERING AND APPLIED SCIENCE

Aerospace Engineering
Bioengineering
Chemical Engineering
Civil Engineering
Computer Science
Computer Science and Engineering
Electrical Engineering
Materials Engineering
Mechanical Engineering
Undeclared—Engineering and Applied Science⁴

SCHOOL OF NURSING

Nursing—Generic/Prelicensure

SCHOOL OF THEATER, FILM AND TELEVISION

Film and Television³
Theater
Individual Field of Concentration²

UNDERGRADUATE MINORS

Accounting
African Studies
Afro-American Studies
American Indian Studies
Anthropology
Applied Development Psychology
Arabic and Islamic Studies
Armenian Studies
Art History
Asian American Studies
Asian Humanities
Asian Languages
Atmospheric and Oceanic Sciences
Biomedical Research
Central and East European Studies
Chicana and Chicano Studies
Civic Engagement
Classical Civilization
Cognitive Science
Comparative Literature
Conservation Biology
Digital Humanities
Disability Studies
Earth and Environmental Science
Education Studies
English
Environmental Engineering
Environmental Systems and Society
European Studies
Film, Television, and Digital Media
French
Geochemistry
Geography
Geography/Environmental Studies
Geology

Geophysics and Planetary Physics
Geospatial Information Systems and Technologies

German
Germanic Languages
Gerontology
Global Studies
Greek
Hebrew and Jewish Studies
History of Science and Medicine
Human Complex Systems
Italian
Labor and Workplace Studies
Language, Interaction, and Culture
Language Teaching
Latin
Latin American Studies
Lesbian, Gay, Bisexual, and Transgender Studies

Linguistics
Mathematics
Mexican Studies
Middle Eastern and North African Studies
Museum Studies
Music History
Naval Science
Near Eastern Languages and Cultures
Neuroscience
Philosophy
Portuguese
Public Affairs
Public Health
Russian Language
Russian Literature
Russian Studies
Scandinavian
Social Thought
Society and Genetics
South Asian Studies
Southeast Asian Studies
Spanish
Spanish Linguistics
Statistics
Theater
Urban and Regional Studies
Visual and Performing Arts Education
Women's Studies

NOTES

1. Applicants are admitted to pre-major status until prerequisites are satisfactorily completed.
2. Not open to entering students.
3. Open to junior-level applicants only [60 semester/90 quarter units completed by time of transfer].
4. Open to freshman-level applicants only.

UCLA's Most Popular Academic Majors

Careers in Business & Economics

Majors:

Business Economics
Economics
Global Studies
Any Major/Accounting Minor

Summer Sports Business & Entertainment Program (MEMES)

Undergraduate Business Club
(One of the biggest in nation)

UCLA Career Center

Business full-time, part-time, internships available
Positions include Management, Accounting, Sales, Marketing, Entrepreneurial Projects

Careers in Engineering/Computer Science/Math

Majors:

Aerospace Engineering
Bioengineering
Chemical Engineering
Civil Engineering
Computer Science
Computer Science and Engineering
Electrical Engineering
Materials Engineering
Mechanical Engineering
Math/Applied Sciences

UCLA graduates have both national and international job prospects. There is a full internship program and state of the art equipment in the Samueli Engineering School.

Careers in Medicine/Sciences

Majors:

Physiological Sciences
Biology (includes Marine)
Chemistry/Physics
Human Biology & Society

Trains for positions in Athletic Training, Sports Fitness, Genetics, Nutrition & Research as well as Medical & Dental School

UCLA Medical Center

#1 in West every year since 1999;
Only Division I medical center in top 15

Careers in Law/Education

Majors:

Political Science
Psychology
Sociology
English
History
Education Minor

UCLA's Law and School of Education are highly rated. UCLA is the #1 feeder school for UCLA Law each year; UCLA has its own Elementary School and Day Care Center for student internships and a high school across the street.

Careers in Mass Media/Motion Picture-Television/Digital Media

Majors:

Communication Studies
Motion Picture/Television/Theatre
Design/Media Arts

UCLA has three motion picture and three television studios, plus a state of the art digital media lab on campus. There is a full scale internship program in all aspects of mass media and production, plus fine arts through the Career Center.

Student-Athlete Development

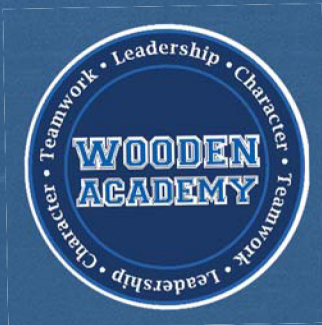
The Bruin Student-Athlete Development Program strives to enhance the student-athlete experience within the University setting by coordinating educational programs that address personal growth, leadership, professional development, and community service. Our goal is to assist student-athletes with their transition to college, provide opportunities to enhance their college experience, support the development of a well-balanced lifestyle, and prepare student-athletes to be champions in life.

Bruins in the Community

Bruin student-athletes have the opportunity to participate in community outreach activities on campus and throughout the Los Angeles area. Examples of these events include:

- Dribble for the Cure
- Weekly visits to Mattel Children's Hospital
- Prime Time Games: Championship Saturday
- UCLA Lab School Jog-A-Thon
- 'I'm Going to College' Program
- Adopt a Classroom
- Bruin for a Day
- Sports clinics
- Elementary school activities and reading days

These opportunities give student-athletes the chance to mentor youth, give back to the community and serve as ambassadors for UCLA Athletics.



WOODEN ACADEMY: Teamwork, Leadership & Character

The Wooden Academy is a leadership development program designed to educate and support Bruin student-athlete leaders. The program was named after legendary Coach John Wooden, and strives to teach the principles of his Pyramid of Success. We believe that these skills will assist student-athletes in their pursuit to be successful leaders and teammates at UCLA, and as they prepare to be champions in life. Student-athletes have the opportunity to participate in the Wooden Academy each year by attending seminars to learn practical leadership lessons from coaches, administrators and Bruin alumni.

• **Leadership Development Program (LDP):** The LDP is designed to teach freshmen and transfers the skills they need to lead themselves and effectively work with others. Our goal is to create a strong network of future Bruin leaders.

• **Wooden Academy Seminars:** These seminars are offered to all student-athletes and address leadership, personal and professional development topics that are relevant to the student-athlete experience.



STAY CONNECTED!

uclaBruins.com /social

UCLA Athletics On Twitter:

www.twitter.com/UCLAAthletics

UCLA Facebook Site:

www.facebook.com/uclaathletics

UCLA Athletics on Instagram:

www.instagram.com/UCLAAthletics

UCLA University Official Site:

www.ucla.edu

UCLA Official Sports Site:

www.uclabruins.com

UCLA University Twitter:

www.twitter.com/UCLA

UCLA Official YouTube

www.YouTube.com/UCLA

UCLA Sports Nutrition Site:

www.fuelingbruins.blogspot.com



You Tube

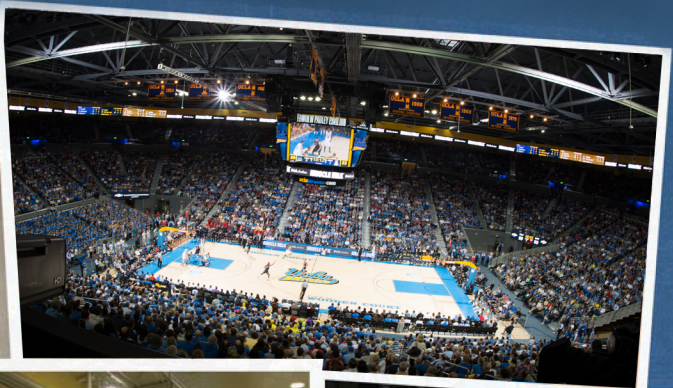


Follow, Like, Subscribe: UCLAATHLETICS

UCLA Student Life & Activities



UCLA offers many on-campus locales to relax, like the Sunset Canyon Recreation Center, which houses numerous pools, volleyball and tennis courts and picnic areas. Bruins can get their workout at the Wooden Center which features cardio equipment with flat screen TV and increased workout space. The Wooden Center also features a rock climbing wall and basketball courts.



UCLA Student Life & Activities



On Campus Housing Options

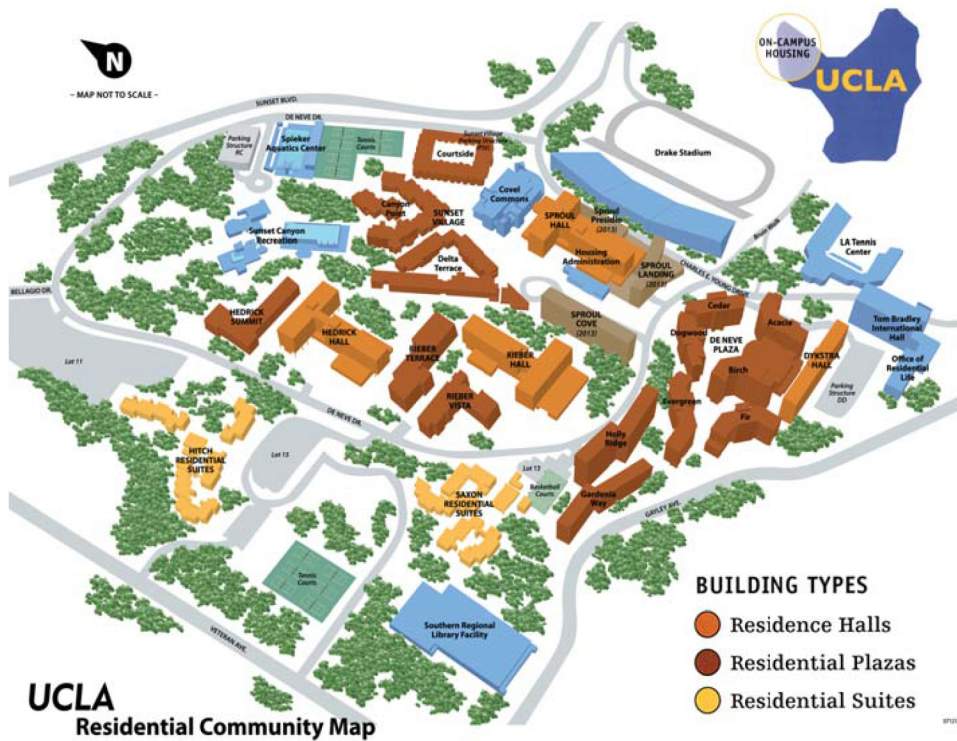
UCLA On-Campus Housing Options:

Have the option of up to 19 meals a week between 7 am and 2 am. Students are guaranteed priority housing all 4 years if they desire.

- A. Classic Residence Halls (Dykstra, Sproul, Rieber, and Hedrick as traditional high-rises)
 - 1. Have separate showers for men and women, community bathrooms, study lounges, and laundry facilities on each floor
- B. Deluxe New Residence Halls – De Neve Gardenia and De Neve Holly
 - 1. Separate community showers and bathrooms for men and women, air conditioning, lounges on each floor, central laundry room, multi-purpose rooms, and game rooms on first floor
- C. Residential Plazas (Sunset Village, De Neve, Hedrick Summit, Rieber Terrace and Rieber Vista)
 - 1. Single/double/triple rooms with two shared bathrooms, air conditioning, study space, lounges, laundry
- D. Residential Suites (Hitch, Saxon)
 - 1. Furnished two-bedrooms with own entrance, living room, shared bathroom. Each has its own laundry room and sundeck/recreation area

Standard On-Campus Housing Amenities:

- Basic Cable Television
- High Speed Internet
- Student Technological Center
- Overnight Shipping and Full Copying Services
- Recreation/Game Rooms
- Free access to basketball, volleyball, pools, tennis
- Early morning/late night restaurants
- 'To-Go' Meals
- Bruin Card Charge Services
- Weekly Maid Services



Numerous amenities are available for students, including dorm placement, roommate selection and free cable TV



Students live in both high rise dorms and apartment-style dorms

UCLA Produces Innovators and Groundbreakers

KAREEM ABDUL-JABBAR

Only player to win 6 NBA MVP awards

TROY AIKMAN

First quarterback to win 3 Super Bowls in 4 years

ARTHUR ASHE

First African-American to win Wimbledon

DONALD BARKSDALE

First African-American to win an Olympic basketball gold medal

TERRY DONAHUE

First football coach to win bowl games in 7 consecutive seasons

LISA FERNANDEZ

First softball player to be named outstanding college athlete of the year (Honda-Broderick Cup)

FLORENCE GRIFFITH-JOYNER

First woman to run the 100m in under 10.50 seconds

JACKIE JOYNER-KERSEE

Only woman to win back-to-back Olympic heptathlons;
Top Female Collegiate Athlete of the Last 25 Years

KARCH KIRALY

First three-time Olympic gold medalist in volleyball

MIKE LODISH

First player to play in 6 Super Bowls

ANN MEYERS

First four-time female basketball All-American

KEN NORTON, JR.

First player to win 3 straight Super Bowls

JACKIE ROBINSON

First African-American to play Major League Baseball

AL SCATES

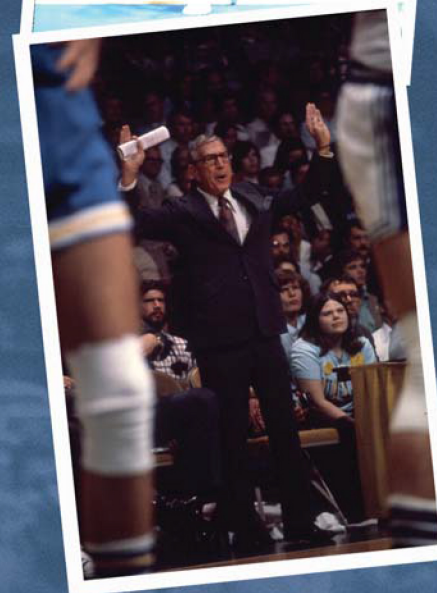
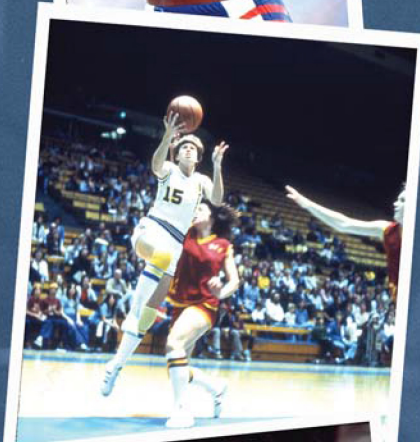
First collegiate coach to win 18 NCAA titles in a single sport (retired with 19 titles in volleyball)

KENNY WASHINGTON

First African-American to play in the modern era NFL

JOHN WOODEN

First man elected to the Basketball Hall of Fame as a player and coach



Famous UCLA Alumni



Cormac Carney, Football
U.S. District Court Judge



Ato Boldon, Track & Field
Announcer NBC, Universal
Sports



Bob Myers, Basketball
General Manager, Golden
State Warriors



Anita Ortega, Basketball
LAPD Captain

Name, Sport	Position
Gary Beban , Football	Sr. Exec. Dir., CB Richard Ellis
Eric Biefeld , Soccer	Firefighter, La Habra, CA
Pete Blackman , Basketball	UCLA Vice-Chancellor
Bethany Bogart , Soccer	Lawyer, Los Angeles
Ato Boldon , Track & Field	Announcer NBC, Universal Sports
Jamie Brown , Basketball	L.A. County Fire Captain
Cormac Carney , Football	US Dist. Court Judge (So. Calif)
Kay Cockerill , Golf	Golf Analyst, NBC-Golf Channel
Courteney Cosso , Soccer	Director, Bruin Varsity Club
Alex Decret , Tennis	Landscape Architect, Los Angeles
Maura Driscoll-Farden , Gymnastics	Broadcaster Lifetime, USA Network
Joel Farkas , Golf	Chairman, JF Real Estate Dev.
Amanda Freed , Softball	Broadcaster, ESPN; Fox Sports West
Ryan Futagaki , Soccer	Sales Executive, LA Medical Corp.
Jen Gardner , Softball	Real Estate Attorney, No. Calif.
Roy Hamilton , Basketball	VP of Production, Fox Sports Net
Tim Harris , Soccer	Sr. VP of Business, Los Angeles Lakers
Melanie Hom , Soccer	Ophthalmologist, San Francisco
Tim Kelly , Volleyball	President, Bring It Promotions
Eric Lin , Tennis	Residency, UCLA Medical Center
Ryan McGuire , Baseball	UCLA MBA; Manager, Bus. Dev.
Cade McNown , Football	Vice President, Lourd Murray
Bob Myers , Basketball	General Manager, Golden State Warriors
Heidi Moneymaker , Gymnastics	Hollywood Stunt Woman, TV-Movies
Heath Montgomery , Tennis	Dentist, Santa Barbara, CA
Paul Nihipali , Volleyball	Movie Director, Video Producer
Anita Ortega , Basketball	Captain, Los Angeles Police Dept.
Doug Partie , Volleyball	President, A.B. Technical Systems
James Puffer , Water Polo	Exec. Dir. Amer. Family Practice, Louisville
Paula Rasmussen , Gymnastics	Pediatrician, Cedars-Sinai Med. Ctr.
Jill Ratner , Soccer	VP of Litigation, Fox Broadcasting
Mike Reider , Golf	Sr. VP/Manager, Union Bank of Calif.
Mary Ricks , Softball	President; Commercial Real Estate, Beverly Hills
Dr. Julie Romias , Volleyball	Doctor, Kaiser Inglewood
Tasha Schwikert , Gymnastics	Broadcaster, NBC; Actress; Sports Agent
LaRee Sugg , Golf	Senior Women's Admin., Richmond Univ
Stacy Sunny , Softball	Production Manager, Fox Sports Net
Necie Thompson , Basketball	FBI Agent, California
Kevin Walker , Basketball	UCLA MBA; GM Amer. Assoc Hockey
Jeff Williams , Volleyball	Sr. Acct. Executive, EMC Corp.
Chuck White , Golf	Voice-over Actor, Bus. Consultant
Dr. Bryan Wiley , Football	Orthopaedic Surgeon
Joel Wolfe , Baseball	Attorney, Sports Agent for WMG



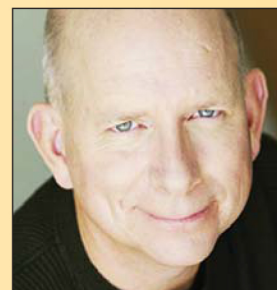
Roy Hamilton, Basketball;
VP Production, Fox Sports



Tim Harris, Soccer
Los Angeles Lakers VP



Heidi Moneymaker,
Gymnastics
Movie Stuntwoman



Chuck White, Golf
Voice-Over Actor

UCLA Alumni Span The World / Job Market

A Key List of Significant UCLA Alumni Accomplishments



Sean Astin
Samwise Gamgee in
"Lord of the Rings" Trilogy



Francis Ford Coppola
Six-time Academy Award
winner (The Godfather I,
II, III)

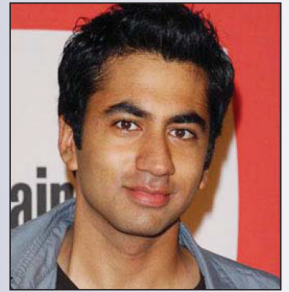


Carrie Ann Inaba
Judge for "Dancing with
the Stars"

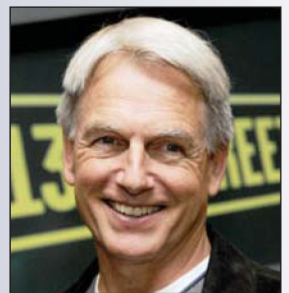


Gabrielle Union
Movie Actress
"Bring It On"

Name	Significant Accomplishment
Val Ackerman	Former WNBA President; US Olympic Committee
Sean Astin	Samwise Gamgee in "Lord of the Rings" Trilogy, Actor in other major roles, "24"
Catherine Bell	Actress; movies and TV Show "Jag", "Army Wives"
Sara Bareilles	Singer/Composer; 3-time Grammy Nominee for "Love Song," & "King of Anything"
Beth Behrs	Actress: "2 Broke Girls"
Howard L. Berman	Calif. Congressman in U.S. House of Rep.
Mayim Bialik	Actress: "The Big Bang Theory", 2-Time Emmy Nom.
Jack Black	Actor; "School of Rock", "Nacho Libre"
Gina Prince-Bythewood	Wrote 'Love & Basketball', 'Secret Life of Bees' Ran track
Brooke Burke	TV Host; Winner 'Dancing With the Stars'
Carol Burnett	Actress, Emmy Award Winner
Nancy Cartwright	Voice of Bart Simpson on "The Simpsons"
Ted Chen	Co-Anchor KNBC "Today in LA"
Francis Ford Coppola	6 Academy Awards (The Godfather I, II, III)
Marilyn McCoo Davis	7-time Grammy Award winner (Fifth Dimension)
Brad Delson	Lead Guitarist, 'Linkin Park'; Multi-Grammy winner
Giada DeLaurentis	Food Network "Everyday Italian"
Rick Dickert	Skyfox, Fox-11 Meteorologist, Emmy Winner
Brenda Ross Dulan	Sr. VP Wells Fargo Bank; Nat. Spokesperson
James Franco	Academy Award Nominee; "127 Hours", "Milk"
Brad Garrett	Won Emmy as Robert in "Everybody Loves Raymond"; 1st Star Search \$100,000 winner
Mariska Hargitay	Actress: "Law & Order"; 2005 Golden Globe winner, Emmy nominee
Mark Harmon	Actor and Producer; CBS "Navy NCIS"; People Magazine "Man of the Year"
Carrie Ann Inaba	Choreographer; Judge on "Dancing w/the Stars"
Heather Locklear	Actress: "Dynasty," "Melrose Place," "Spin City"
Frank Marshall	President of Kennedy-Marshall; helped produce "Indiana Jones" and "Back to the Future" series
Megan McArthur	Astronaut; Space Shuttle Atlantis
Danica McKellar	Actress: "The Wonder Years;" TV's "West Wing;" Published for mathematics research
Billy Mills	1st black graduate, UCLA Law School; 1st black elected to L.A. City Council; Superior Court Judge
Michael Nash	Presiding Judge, L.A. Juvenile Court
Michael Ovitiz	Former CEO, Disney Corporation
Kal Penn	Obama advisor; actor 'House', 'Harold and Kumar'
Tim Robbins	Actor/Producer; 2003 Academy Award winner "Mystic River"; 2003 UCLA Alumnus of the Year
Nobutada Saji	CEO, Suntory, Ltd.; Int. Businessman
Henry Samueli	UCLA Samueli Engineering School; Owner 2007 Stanley Cup Champion Anaheim Ducks
Darren Star	Golden Globe, Emmy nominee as producer of HBO's "Sex In The City;" Assisted "BH 90210" and "Melrose Place"
Robert R. Takasugi	Judge, U.S. District Court; 1st Japanese-American appointed Fed. Court Judge
Antonio Villaraigosa	Former Mayor of Los Angeles; Former Speaker of the California Assembly
Gabrielle Union	Actress; "Bring It On", "Breakin' All the Rules", "Daddy's Little Girl", "Meet Dave"
Casey Wasserman	President, Owner WMG, Businessman
Jaleel White	Actor: Urkel in "Family Matters", Director
Jane Yamamoto	Newscaster-Field Reporter for Fox News-LA
Zev Yaroslavsky	Los Angeles County Supervisor, 3rd District



Kal Penn
Advisor for the Obama
Administration; Actor



Mark Harmon
Actor, Former Football Player
People Mag. "Man of Year"
Star of Navy NCIS



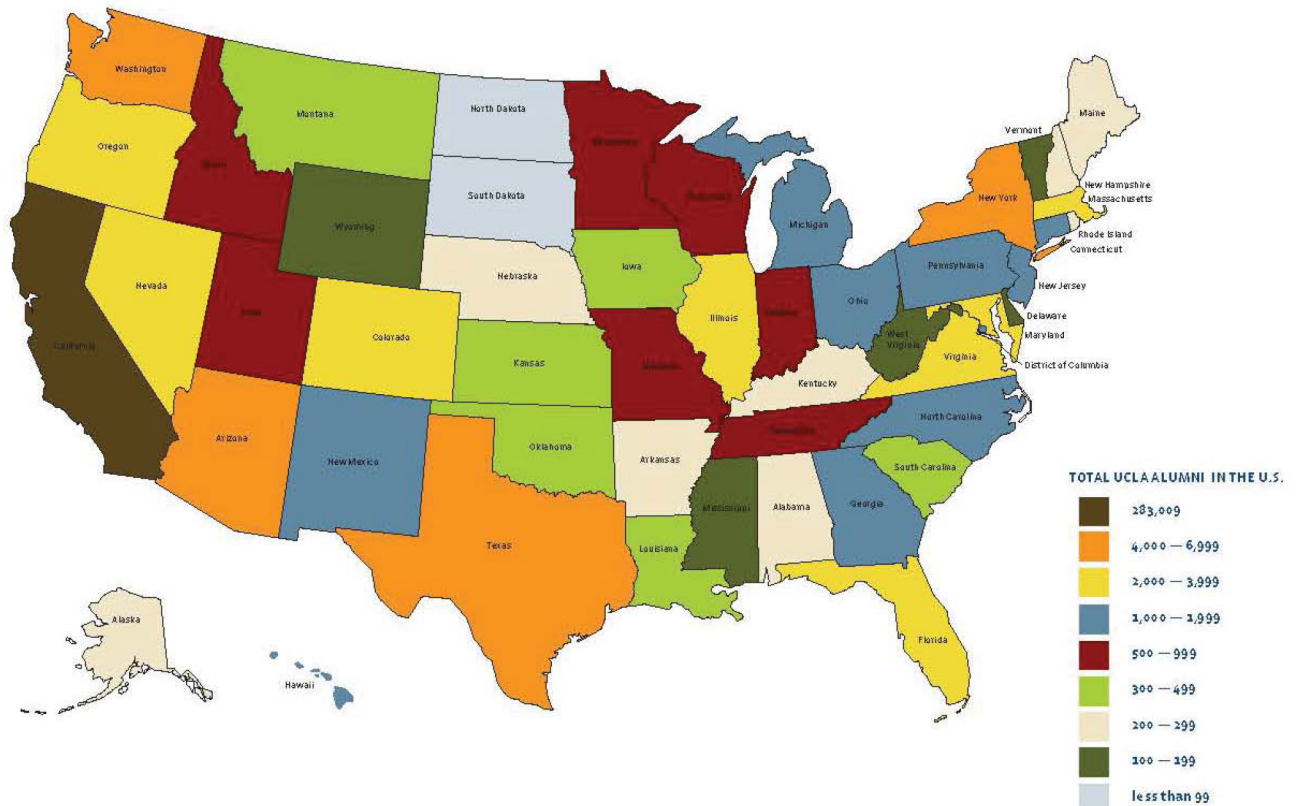
Heather Locklear
Actress
Melrose Place, Spin City



Antonio Villaraigosa
Former Mayor of Los Angeles
and Speaker of the California
Assembly

UCLA Alumni Networks Cover The World

UCLA Alumni in the United States (3% live in foreign countries)



UCLA Alumni Groups Exist World-Wide (www.UCLAalumni.net/FindBruins)

In California

- Los Angeles' Westside
- Downtown Los Angeles
- LA-South Bay/Beach Cities
- Lake Arrowhead Area
- Orange County
- Greater Pasadena
- Palm Springs
- Inland Empire
- San Bernardino and Riverside Counties
- Sacramento
- San Diego County
- San Fernando Valley
- San Francisco/Bay Area
- Santa Clarita
- Ventura County
- Whittier

Outside California

- Boston, MA
- Chicago, IL
- Honolulu, HI
- New York City
- Phoenix, AZ
- Portland, OR
- Seattle, WA
- Washington DC

International

- China
- Hong Kong
- Japan
- Korea
- Singapore
- Taiwan
- Thailand

The Portfolio of the Typical UCLA Graduate

(almost 300,000 alumni were utilized for the figures below along with career center and local area housing statistics)

\$77,500	Average yearly personal income
\$765,355	Average investment portfolio value
\$522,500	Average value of home ownership
92%	Own their own homes or condominiums
51%	Own other real estate properties
68%	Hold management/professional positions
67%	Have done postgraduate studies after UCLA
65%	Donate up to 10% of income to charity
75%	Have traveled outside U.S. in last 2 years

Where UCLA Graduates Live

- 45% Live in Los Angeles County
- 62% Live in Southern California
- 77% Live in the State of California
- 97% Live in the United States

This Is Los Angeles

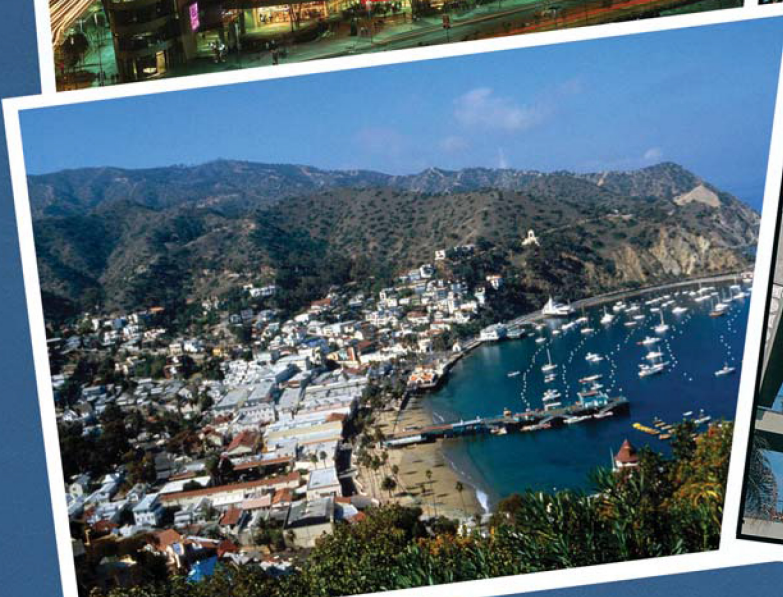
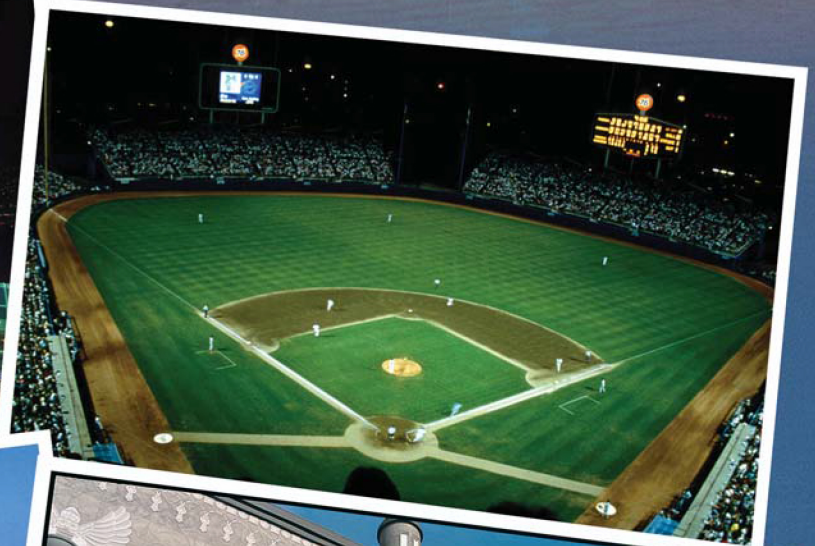


Art and culture are a very vibrant part of Los Angeles. The Getty Center is just one of many museums in the area. The Disney Concert Hall is also a short drive from campus. Westwood, a suburb of Los Angeles, offers UCLA students and the surrounding communities many entertainment options. Movie premieres are a common occurrence as stars often visit the Fox Theater for opening night. Westwood is home to numerous coffee shops, stores and restaurants and is just minutes from campus.



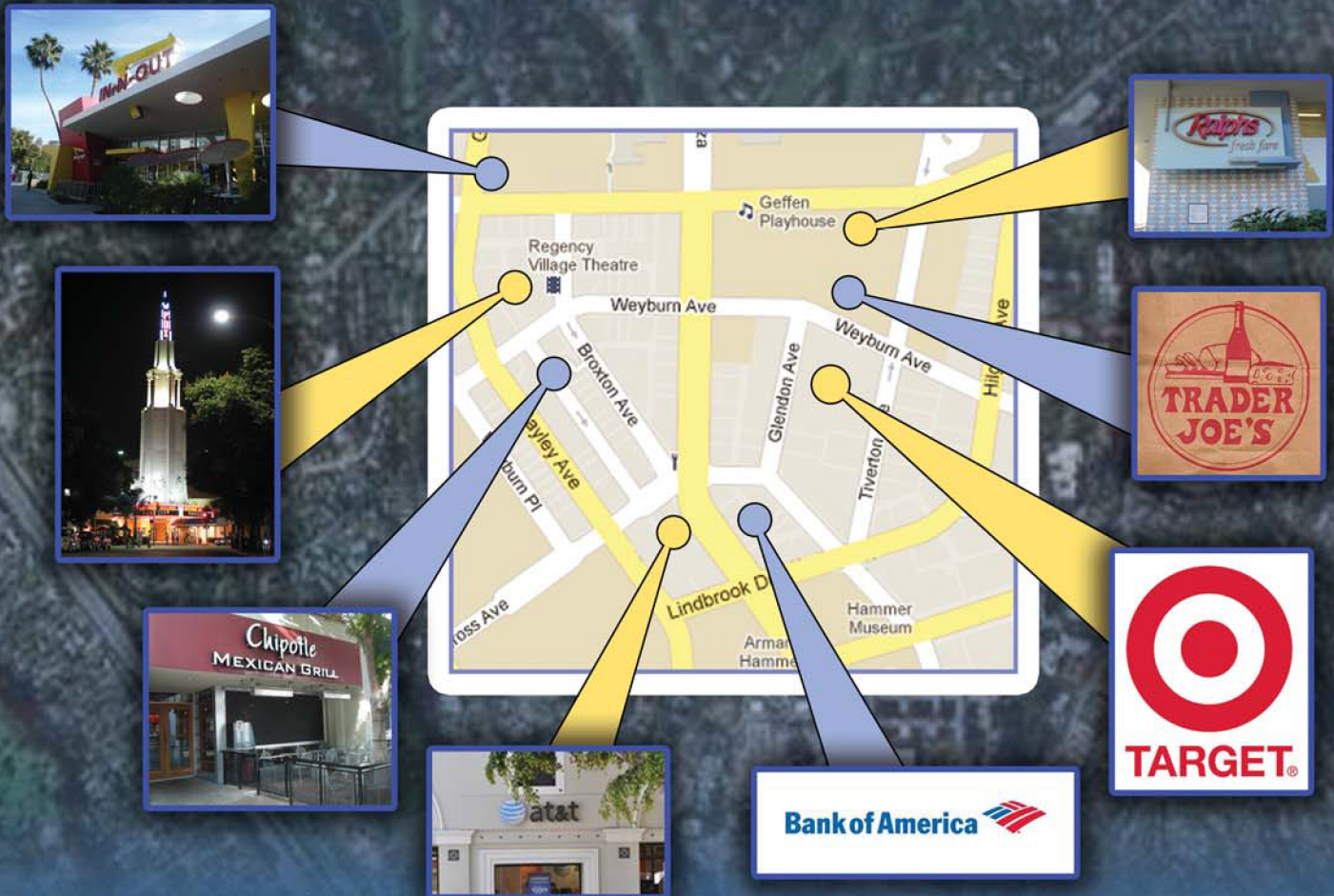
This Is Los Angeles

The city of Los Angeles is internationally recognized as America's leader in the entertainment and communications industries, as well as tourism and recreation. Los Angeles and surrounding Orange County offer numerous options for fun and entertainment. Southern California is home to two NBA, NHL, MLB and MLS teams. Los Angeles also has played host to numerous sporting events including the XGames, World Cup, Super Bowl and Olympics. Southern California also has three amusement parks - Knotts Berry Farm, Magic Mountain and Disneyland.



Westwood Village Directory

Westwood Village is attached to the UCLA campus and a five minute walk from the UCLA residence halls, fraternities or sororities. Here are resources available to go with the ASUCLA Student Union.



BANKS:

Bank of America
Bank of the West
Chase
CitiBank
Wells Fargo

CELL PHONES:

AT&T
Sprint
T-Mobile
Verizon

DEPARTMENT STORES:

Aahs!!
American Apparel
Radio Shack
Target
Urban Outfitters

GENERAL ITEMS:

Chevron Gas/Store
CVS Pharmacy
Rite-Aid
7-11 Store

JEWELRY/ WATCHES:

Sarah Leonard Jewelers

MARKETS:

Ralph's
Trader Joe's
Whole Foods

MOVIES:

iPic Theatres
Landmark Theatre
Regency Theatres

RESTAURANTS:

Barney's Beanery
(Sports Bar)
BJ's
Corner Bakery
CPK
Headlines
Napa Valley Grill
Palomino's

HEALTH:

UCLA Medical Center
Village Eyes Optometry

FAST FOOD:

800 Degrees
5 Guys
Chick-Fil-A
Chipotle
Diddy Riese Cookies
Domino's Pizza
El Pollo Loco
Five Guys
In-N-Out Burger

HAIR STYLING:

KAMI's
Oakley's

CULTURE:

Geffen Playhouse
Hammer Museum

Beaches/Attractions/Malls Near The UCLA Campus

Top 7 Beaches Near UCLA Campus

Santa Monica Beach/Pier

Malibu Beach

Will Rogers State Beach

Venice Beach

Hermosa Beach

Manhattan Beach

Marina del Rey (Beach/Boating Area)

Attractions/Malls near UCLA campus

Academy of Motion Pictures

Armand Hammer Museum

*Beverly Center

*Century City Mall

Disney Concert Hall

*Dolby Theatre & Mall

*Fox Hills Mall

Getty Center

Geffen Playhouse

Greek Theatre

Griffith Observatory

Hollywood Bowl

Hollywood Walk of Fame

House of Blues

*Howard Hughes Promenade

La Brea Tar Pits

Melrose Avenue

Museum of Natural History

Museum of Tolerance

Old Town Pasadena

Queen Mary

Riviera Country Club

Rodeo Drive

Santa Monica Pier

The Sunset Strip

*Third Street Promenade

Universal Studios

Universal City Walk

*Westside Pavilion

*Malls short driving distance from UCLA Campus

Ackerman Student Union Services



B LEVEL

ADIDAS - UCLA team store
BEARWEAR - UCLA Clothing Store
BOOKZONE - Wide variety, author signings
CARD, GIFT, POSTER SHOP - For any occasion
CLINIQUE STORE - Beauty services
COMPUTER STORE - Various electronic needs
MARKET PLACE - Sundries & snacks
THINK GREEN SHOP - Special 'green' items

A LEVEL

ATM MACHINES - Bank of America, Wells
Fargo, Chase, others
BRUIN BUZZ CAFE - Best in coffees & snacks
CAMPUS CUTS - Hair Salon
CAMPUS PHOTO - Digital, photo needs
COOPERAGE - Giant Screen TV - Food:
Carl's Jr, Taco Bell, Curbside
GAME ON - Video, online games
JAMBA JUICE - Smoothies, yogurt
LECTURE NOTES - Subscription course notes
STUDENT INFO DESK - Room reservations
TEXTBOOKS - All classes, Book Buyback
TSUNAMI - Sushi, Japanese noodles, soups
U.S. POST OFFICE - Full service operation
VIEWPOINT LOUNGE - TV's, music, games

FIRST FLOOR

GREENHOUSE - Salad bar, soups, health items
PANDA EXPRESS - Chinese entrees
RUBIO'S - Fish tacos, burritos, health-mex
RX CANDY - Candy by the ounce
SBARRO - Italian entrees, pasta, pizza
WETZEL'S PRETZELS/RELAXTATION - Bakery,
pretzels, teas & boba drinks
WOLFGANG PUCK - Casual dining and drinks

SECOND FLOOR

GRAND BALLROOM - Campus Events, Movies
& Speakers
MEETING ROOMS - Seating for 12 to 45

THIRD FLOOR

STUDY LOUNGES - Open seating, extended
hours
MEETING ROOMS - Seating for 12 to 35

WEBSITE:

www.ASUCLA.UCLA.edu

